

MARC Content Designation Utilization Project:

Inquiry and Analysis

**Format Content Designation Analysis:
Data Report—General Profiles**

William E. Moen
<wemoen@unt.edu>
Shawne D. Miksa
<smiksa@unt.edu>

Amy Eklund
Serhiy Polyakov
Gregory Snyder

Texas Center for Digital Knowledge,
School of Library and Information Sciences
University of North Texas

December 20, 2005

Version Control				
Specify the Version , Date and Time of Modification of the document, Name of the Modifier , Section of the document where the changed have been made, and Brief Description of the Changes .				
Document Title	Format Content Designation Analysis: Data Report—General Profiles			
Document Filename (Current)	FAN_DR_GenProfiles_wem_d2_20Dec2005			
Original Creation Date	November 03, 2005			
Original Author	Snyder			
Version	Date and Time of Modification	Name of Modifier	Section Modified	Brief Description of the Changes
Draft 1	03 Nov 2005	Snyder	All	Created; Supersedes previous Query Results documents [FAN_QueryResults_*_d*_.doc or FAN_QueriesResults_*_d*_.doc]
Draft 1	08 Nov 2005	Polyakov	Intro, 2.1, 2.8, 2.9	Tables added, rearranged.
Draft 1	09 Nov 2005	Snyder	All	Table and graph numbers added
Draft 1	10 Nov 2005	Snyder	Intro through 2.8	Updated table and graph names, headers. Removed/Added set names.
Draft 1	11 Nov 2005	Snyder	2.9	Updated table and graph names, headers. Removed/Added set names.
Draft 1	11 Nov 2005	Snyder	Index of Tables and Figures	Inserted.
Draft 1	12 Nov 2005	Eklund	All	Excised narrative interpretation.
Draft 1	13 Nov 2005	Polyakov	2.8. 209	Q17 - added results for all sets.
Draft 2	14 Nov 2005	Snyder	2.6	Q14 – added results for Sets 56M, 00_LC, and 00_nonLC.
Draft 2	15 Nov 2005	Snyder	All	Reformatted and repositioned table titles.
Draft 2	15 Nov 2005	Snyder	All	Reformatted percentages to two decimal places only.
Draft 2	16 Nov 2005	Snyder	References	Added.
Draft 2	16 Nov 2006	Snyder	2.6	Added values z and u to Encoding Level tables.
Draft 2	16 Nov 2005	Snyder	ToC, Index of Tables and Figures	Updated
Draft 2	20 Dec 2005	Moen	All	Final edits
Draft 2	21 Dec 2005	Snyder	Index of Tables and Figures	Recreated and formatted

Table of Contents

Format Content Designation Analysis: Data Report—General Profiles	1
Table of Contents	1
Index of Tables and Figures.....	1
1. Introduction	1
2. General Profile Query Results	3
2.1. Record Length	3
2.2. Record Status.....	4
2.3. Type of Record	13
2.4. Bibliographic Level	19
2.5. Type of Control	29
2.6. Encoding Level	36
2.7. Descriptive Cataloging Form	58
2.8. Cataloging Source	67
2.9. Date Ranges.....	84
2.9.1. Date Entered on File	84
2.9.2. Date and Time of Latest Transaction.....	89
3. References.....	94

Index of Tables and Figures

Table 1.1. Total Number of Records per Set	1
Figure 1.1. Total Number of Records per Set.....	2
Table 2.1.1. Record Length Statistics	3
Figure 2.1.1. Distribution of Record Lengths: MCDU Project Dataset.....	4
Table 2.2.1. Distributin of Records by Record Status: MCDU Project Dataset	4
Table 2.2.2. Distribution of Records by Record Status: LC-Created Records Set	5
Table 2.2.3. Distribution of Records by Record Status: NonLC-Created Records Set.....	5
Table 2.2.4. Distribution of Records by Record Status: Books, Pamphlets, and Printed Sheets Subsets	6
Table 2.2.5. Distribution of Records by Record Status: Cartographic Materials Subsets	6
Table 2.2.6. Distribution of Records by Record Status: Electronic Resources Subsets	7
Table 2.2.7. Distribution of Records by Record Status: Continuing Resources Subsets	7
Table 2.2.8. Distribution of Records by Record Status: Manuscripts Subsets	8
Table 2.2.9. Distribution of Records by Record Status: Music Subsets	8
Table 2.2.10. Distribution of Records by Record Status: Sound Recordings Subsets.....	9
Table 2.2.11. Distribution of Records by Record Status: Projected Media Subsets.....	9
Table 2.2.12. Distribution of Records by Record Status: Graphic Materials Subsets	10
Table 2.2.13. Distribution of Records by Record Status:Three Dimensional Objects and Realia Subsets.....	10
Table 2.2.14. Distribution of Records by Record Status and Type of Record, As a Percentage of Each Type of Record: MCDU Project Dataset.....	11
Table 2.2.15. Distribution of Records by Record Status and Type of Record, As a Percentage of Each Type of Record: LC-Created Records Set.....	12
Table 2.2.16 Distribution of Records by Record Status and Type of Record, As a Percentage of Each Type of Record: nonLC-Created Records Set.....	13
Table 2.3.1. Distribution of Records by Type of Record: MCDU Project Dataset	14
Table 2.3.2. Distribution of Records by Type of Record: LC-Created Records Set	15
Table 2.3.3. Distribution of Records by Type of Record: nonLC-Created Records Set	16
Table 2.3.4. Distribution of Records by Type of Record: Cartographic Materials Subsets	16
Table 2.3.5. Distribution of Records by Type of Record: Electronic Resources Subsets.....	17
Table 2.3.6. Distribution of Records by Type of Record: Music Subsets	18

Table 2.3.7. Distribution of Records by Type of Record: Sound Recordings Subsets 18

Table 2.3.8. Distribution of Records by Type of Record: Graphic Materials Subsets..... 18

Table 2.3.9. Distribution of Records by Type of Record:Three Dimensional Objects and
 Realia Subsets 19

Table 2.4.1. Distribution of Records by Bibliographic Level: MCDU Project Dataset..... 19

Table 2.4.2. Distribution of Records by Bibliographic Level: LC-Created Records Set..... 20

Table 2.4.3. Distribution of Records by Bibliographic Level: nonLC-Created Records Set..... 20

Table 2.4.4. Distribution of Records by Bibliographic Level: Books, Pamphlets, and
 Printed Sheets Subsets 21

Table 2.4.5. Distribution of Records by Bibliographic Level: Cartographic Materials Subsets 21

Table 2.4.6. Distribution of Records by Bibliographic Level: Electronic Resources Subsets 22

Table 2.4.7. Distribution of Records by Bibliographic Level: Continuing Resources Subsets..... 22

Table 2.4.8. Distribution of Records by Bibliographic Level: Manuscripts Subsets..... 23

Table 2.4.9. Distribution of Records by Bibliographic Level: Music Subsets..... 23

Table 2.4.10. Distribution of Records by Bibliographic Level: Sound Recordings Subsets 24

Table 2.4.11. Distribution of Records by Bibliographic Level: Projected Media Subsets 24

Table 2.4.12. Distribution of Records by Bibliographic Level: Graphic Materials Subsets 25

Table 2.4.13. Distribution of Records by Bibliographic Level: Three Dimensional Objects and
 Realia Subsets..... 25

Table 2.4.14. Distribution of Type of Record and Bibliographic Level, As a Percentage of Each Type of
 Record: MCDU Project Dataset..... 26

Table 2.4.15. Distribution of Type of Record and Bibliographic Level, As a Percentage of Each Type of
 Record: LC-Created Records Set..... 27

Table 2.4.16. Distribution of Type of Record and Bibliographic Level, As a Percentage of Each Type of
 Record: nonLC-Created Records Set..... 28

Table 2.5.1. Distribution of Records by Type of Control: MCDU Project Dataset 29

Table 2.5.2. Distribution of Records by Type of Control: LC-Created Records Set 30

Table 2.5.3. Distribution of Records by Type of Control: nonLC-Created Records Set 30

Table 2.5.4. Distribution of Records by Type of Control: Books, Pamphlets, and
 Printed Sheets Subsets 30

Table 2.5.5. Distribution of Records by Type of Control: Cartographic Materials Subsets 31

Table 2.5.6. Distribution of Records by Type of Control: Electronic Resources Subsets..... 31

Table 2.5.7. Distribution of Records by Type of Control: Continuing Resources Subsets 31

Table 2.5.8. Distribution of Records by Type of Control: Manuscripts Subsets 32

Table 2.5.9. Distribution of Records by Type of Control: Music Subsets 32

Table 2.5.10. Distribution of Records by Type of Control: Sound Recordings Subsets 32

Table 2.5.11. Distribution of Records by Type of Control: Projected Media Subsets..... 33

Table 2.5.12. Distribution of Records by Type of Control: Graphic Materials Subsets 33

Table 2.5.13. Distribution of Records by Type of Control: Three Dimensional Objects and
 Realia Subsets..... 33

Table 2.5.14. Distribution of Records by Type of Record and Type of Control, As a Percentage of Each
 Type of Record: MCDU Project Dataset..... 34

Table 2.5.15. Distribution of Records by Type of Record and Type of Control, As a Percentage of Each
 Type of Record: LC-Created Records Set..... 35

Table 2.5.16. Distribution of Records by Type of Record and Type of Control, As a Percentage of Each
 Type of Record: nonLC-Created Records Set..... 36

Table 2.6.1. Distribution of Records by Encoding Level: MCDU Project Dataset 37

Table 2.6.2. Distribution of Records by Encoding Level: LC-Created Records Set 38

Table 2.6.3. Distribution of Records by Encoding Level: NonLC-Created Records Set..... 39

Table 2.6.4. Distribution of Records by Encoding Level: Books, Pamphlets, and
 Printed Sheets Subsets 40

Table 2.6.5. Distribution of Records by Encoding Level: Cartographic Materials Subsets 41

Table 2.6.6. Distribution of Records by Encoding Level: Electronic Resources Subsets..... 42

Table 2.6.7. Distribution of Records by Encoding Level: Continuing Resources Subsets 43

Table 2.6.8. Distribution of Records by Encoding Level: Manuscripts Subsets 44

Table 2.6.9. Distribution of Records by Encoding Level: Music Subsets 45

Table 2.6.10. Distribution of Records by Encoding Level: Sound Recordings Subsets	46
Table 2.6.11. Distribution of Records by Encoding Level: Projected Media Subsets.....	47
Table 2.6.12. Distribution of Records by Encoding Level: Graphic Materials Subsets	48
Table 2.6.13. Distribution of Records by Encoding Level: Three-Dimensional Objects and Realia Subsets.....	49
Table 2.6.14a. Distribution of Records by Encoding Level (Numeric Codes) and Type of Record, As a Percentage of Each Type of Record: MCDU Project Dataset.....	50
Table 2.6.14b. Distribution of Records by Encoding Level (Alphabetic Codes) and Type of Record, As a Percentage of Each Type of Record: MCDU Project Dataset.....	51
Table 2.6.15a. Distribution of Records by Encoding Level (Numeric Codes) and Type of Record, As a Percentage of Each Type of Record: LC-Created Records Set.....	52
Table 2.6.15b. Distribution of Records by Encoding Level (Alphabetic Codes) and Type of Record, As a Percentage of Each Type of Record: LC-Created Records Set.....	54
Table 2.6.16a. Distribution of Records by Encoding Level (Numeric Codes) and Type of Record, As a Percentage of Each Type of Record: nonLC-Created Records Set.....	55
Table 2.6.16b. Distribution of Records by Encoding Level (Alphabetic Codes) and Type of Record, As a Percentage of Each Type of Record: nonLC-Created Records Set.....	56
Table 2.7.1. Distribution of Records by Descriptive Cataloging Form: MCDU Project Dataset	58
Table 2.7.2. Distribution of Records by Descriptive Cataloging Form: LC-Created Records Set	58
Table 2.7.3. Distribution of Records by Descriptive Cataloging Form: nonLC-Created Records Set	59
Table 2.7.4. Distribution of Records by Descriptive Cataloging Form: Books, Pamphlets, and Printed Sheets Subsets	59
Table 2.7.5. Distribution of Records by Descriptive Cataloging Form: Cartographic Materials Subsets...	60
Table 2.7.6. Distribution of Records by Descriptive Cataloging Form: Electronic Resources Subsets.....	60
Table 2.7.7. Distribution of Records by Descriptive Cataloging Form: Continuing Resources Subsets ...	61
Table 2.7.8. Distribution of Records by Descriptive Cataloging Form: Manuscripts Subsets	61
Table 2.7.9. Distribution of Records by Descriptive Cataloging Form: Music Subsets.....	62
Table 2.7.10. Distribution of Records by Descriptive Cataloging Form: Sound Recordings Subsets	62
Table 2.7.11. Distribution of Records by Descriptive Cataloging Form: Projected Media Subsets.....	63
Table 2.7.12. Distribution of Records by Descriptive Cataloging Form: Graphic Materials Subsets.....	63
Table 2.7.13. Distribution of Records by Descriptive Cataloging Form: Three-Dimensional Objects and Realia Subsets.....	64
Table 2.7.14. Distribution of Records by Descriptive Cataloging Form and Type of Record, As a Percentage of Each Type of Record: MCDU Project Dataset.....	64
Table 2.7.15. Distribution of Records by Descriptive Cataloging Form and Type of Record, As a Percentage of Each Type of Record: LC-Created Records Set.....	65
Table 2.7.16. Distribution of Records by Descriptive Cataloging Form and Type of Record, As a Percentage of Each Type of Record: nonLC-Created Records Set.....	66
Table 2.8.1. Top 20 Original Cataloging Agency Codes: MCDU Project Dataset.....	67
Table 2.8.2. Top 20 Original Cataloging Agency Codes: LC-Created Records Set.....	68
Table 2.8.3. Top 20 Original Cataloging Agency Codes: non LC-Created Records Set.....	68
Table 2.8.4. Top 20 Original Cataloging Agency Codes: Books, Pamphlets, and Printed Sheets, LC-Created Records.....	69
Table 2.8.5. Top 20 Original Cataloging Agency Codes: Books, Pamphlets, and Printed Sheets, nonLC-Created Records.....	69
Table 2.8.6. All Original Cataloging Agency Codes: Cartographic Materials, LC-Created Records	71
Table 2.8.7. Top 20 Original Cataloging Agency Codes: Cartographic Materials, nonLC-Created Records.....	71
Table 2.8.8. All Original Cataloging Agency Codes: Electronic Resources, LC-Created Records	72
Table 2.8.9. Top 20 Original Cataloging Agency Codes: Electronic Resources, nonLC-Created Records.....	72
Table 2.8.10. All Original Cataloging Agency Codes: Continuing Resources, LC-Created Records.....	73
Table 2.8.11. Top 20 Original Cataloging Agency Codes: Continuing Resources, nonLC-Created Records.....	73
Table 2.8.12. All Original Cataloging Agency Codes: Manuscripts, LC-Created Records	74
Table 2.8.13. Top 20 Original Cataloging Agency Codes: Manuscripts, nonLC-Created Records.....	74

Table 2.8.14. All Original Cataloging Agency Codes: Music, LC-Created Records	75
Table 2.8.15. Top 20 Original Cataloging Agency Codes: Music, nonLC-Created Records.....	75
Table 2.8.16. All Original Cataloging Agency Codes: Sound Recordings, LC-Created Records.....	76
Table 2.8.17. Top 20 Original Cataloging Agency Codes: Sound Recordings, nonLC-Created Records	76
Table 2.8.18. Top 20 Original Cataloging Agency Codes: Projected Media, LC-Created Records	77
Table 2.8.19. Top 20 Original Cataloging Agency Codes: Projected Media, nonLC-Created Records	77
Table 2.8.20. All Original Cataloging Agency Codes: Graphic Materials, LC-Created Records	78
Table 2.8.21. Top 20 Original Cataloging Agency Codes: Graphic Materials, nonLC-Created Records	78
Table 2.8.22. All Original Cataloging Agency Codes: Three-Dimensional Objects and Realia, LC-Created Records	79
Table 2.8.23. Top 20 Original Cataloging Agency Codes: Three-Dimensional Objects and Realia, nonLC-Created Records	79
Table 2.8.24. Distribution of Records by Cataloging Source Code: MCDU Project Dataset.....	80
Table 2.8.25. Distribution of Records by Cataloging Source Code: LC-Created Records Set and nonLC-Created Records Set	80
Table 2.8.26. Distribution of Records by Cataloging Source Code: Books, Pamphlets, and Printed Sheets Subsets	80
Table 2.8.27. Distribution of Records by Cataloging Source Code: Cartographic Materials Subsets.....	81
Table 2.8.28. Distribution of Records by Cataloging Source Code: Electronic Resources Subsets.....	81
Table 2.8.29. Distribution of Records by Cataloging Source Code: Continuing Resources Subsets.....	81
Table 2.8.30. Distribution of Records by Cataloging Source Code: Manuscripts Subsets.....	82
Table 2.8.31. Distribution of Records by Cataloging Source Code: Music Subsets.....	82
Table 2.8.32. Distribution of Records by Cataloging Source Code: Sound Recordings Subsets	82
Table 2.8.33. Distribution of Records by Cataloging Source Code: Projected Media Subsets	83
Table 2.8.34. Distribution of Records by Cataloging Source Code: Graphic Materials Subsets.....	83
Table 2.8.35. Distribution of Records by Cataloging Source Code: Three Dimensional Objects and Realia Subsets.....	83
Table 2.9.1. Invalid Date Values: MCDU Project Dataset	84
Table 2.9.2. Ranges of Dates Entered on File: All Sets	84
Figure 2.9.1. Distribution of Number of Records per Day by Date Entered on File: MCDU Project Dataset.....	85
Table 2.9.3. Number of Records per Year by Date Entered on File: MCDU Project Dataset	86
Table 2.9.4. Number of Records per Year by Date Entered on File: All Sets of LC-Created Records	87
Table 2.9.5. Number of Records per Year by Date Entered on File: All Sets of nonLC-Created Records	88
Table 2.9.6. Newest and Oldest Records by Date and Time of Latest Transaction: All Sets	89
Figure 2.9.2. Distribution of Number of Records per Day by Date and Time of Latest Transaction: MCDU Project Dataset.....	90
Table 2.9.7. Number of Records per Year by Date and Time of Latest Transaction: MCDU Project Dataset.....	91
Table 2.9.8. Number of Records per Year Based on Date and Time of Latest Transaction: All Sets of LC-Created Records	92
Table 2.9.9. Number of Records per Year Based on Date and Time of Latest Transaction: All Sets of nonLC-Created Records	93

Format Content Designation Analysis: Data Report – General Profiles

1. Introduction

As a part of its investigation of catalogers' utilization of MARC content designation, the project team conducted a series of analyses on the decomposed MARC records. The results of these analyses support the project goal of providing empirical evidence to document MARC 21 content designation use by catalogers, as well as a provide a guiding framework for the project's second-level analysis efforts.

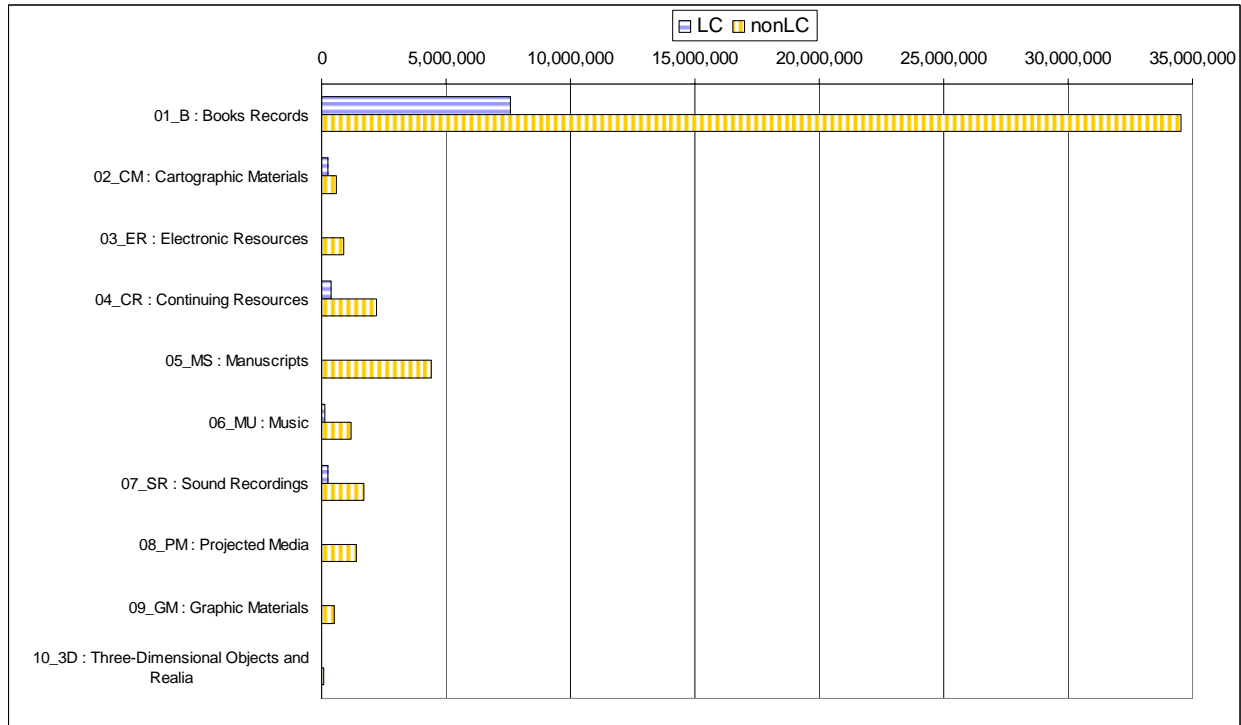
The raw data used in these analyses are a set of more than 56 million MARC records provided by OCLC from its WorldCat database (known as the MCDU Project Dataset). These records have been decomposed into the content designation structures (CDS) that serve as the basic units of analysis for this project. The decomposed records have been stored in a relational database to facilitate analysis of the data using SQL queries. Because of the sheer size of the resulting database, as well as our interest in making statements about the use of MARC 21 content designation by catalogers-in-general, we have chosen to separate records created by Library of Congress catalogers from those contributed by OCLC member institutions. These considerations have resulted in the division of the 56 million records into two primary sets: those records created by Library of Congress catalogers and those created and contributed by OCLC member libraries. The criteria used to segregate these two sets based on the institution that created them are detailed in the project documents *Format Content Designation Analysis: Methodology and Procedures*. Moreover, due to systematic variation in the use of content designation depending on the type of material being cataloged, the records in each of these sets are further segregated into ten discrete subsets based on form of material. The criteria for defining these subsets are described in the project document *Statistical Considerations and Sampling Criteria*. The queries designed to extract each of the record sets to be analyzed and to create separate databases for each set are contained in the document *Format Content Designation Analysis: Set Definition and Extraction Queries*. The numbers of records in each set are represented in the table and graph below.

Table 1.1. Total Number of Records per Set

	Set Name	Number	%	Set Name	Number	%	Total
MCDU Project Dataset	56M	56,177,383	100.0000				
MCDU Project Dataset by LC/nonLC	00_LC	8,713,665	15.5110	00_nonLC	47,463,718	84.4890	56,177,383
Books Records	01_B_LC	7,595,887	13.5213	01_B_nonLC	34,546,200	61.4949	42,142,087
Cartographic Materials	02_CM_LC	242,132	0.4310	02_CM_nonLC	596,642	1.0621	838,774
Electronic Resources	03_ER_LC	39,879	0.0710	03_ER_nonLC	871,881	1.5520	911,760
Continuing Resources	04_CR_LC	388,332	0.6913	04_CR_nonLC	2,193,009	3.9037	2,581,341
Manuscripts	05_MS_LC	11,471	0.0204	05_MS_nonLC	4,390,970	7.8163	4,402,441
Music	06_MU_LC	109,249	0.1945	06_MU_nonLC	1,167,654	2.0785	1,276,903
Sound Recordings	07_SR_LC	241,940	0.4307	07_SR_nonLC	1,702,342	3.0303	1,944,282

	Set Name	Number	%	Set Name	Number	%	Total
Projected Media	08_PM_LC	22,088	0.0393	08_PM_nonLC	1,415,606	2.5199	1,437,694
Graphic Materials	09_GM_LC	62,625	0.1115	09_GM_nonLC	506,401	0.9014	569,026
Three-Dimensional Objects and Realia	10_3D_LC	62	0.0001	10_3D_nonLC	73,013	0.1300	73,075

Figure 1.1. Total Number of Records per Set



The table above shows that the overall record set of 56 million records (“56M record set”, or “set 56M”) consists primarily of books records. Each of the record sets for manuscripts, continuing resources, sound recordings, projected media, and music records are significant in size, with between 1 and 4.5 million records each. The Electronic Resources, Cartographic Materials, Graphic Materials, and Three-Dimensional Objects and Realia record sets each have less than 1 million records. Each of the record sets is of sufficient size to ensure validity of analysis; since the entire population of the dataset is being examined, even a proportionately small set such as Three-Dimensional Objects and Realia will provide statistically valid information.

To arrive at the results contained in this document, the records in the dataset, the sets created based on the source of cataloging, and the sets reflecting the format of material described by the records were subjected to a number of queries based on the analyses dictated by the project objectives and research questions. The individual queries, as well as their development and organization, are described in the project document *Format Content Designation Analysis: Set Profiling and Analysis Queries*.

This document provides a general profile of describes the MCDU Project Dataset of 56 million records and its subsets by describing various characteristics of the sets such as record lengths, types of records, descriptive cataloging form used, and date ranges. It provides each of the questions posed to the database, the associated set name(s), and the results returned. In some cases the results of several queries are represented in a single table or graph; however, more often several tables are required to present the data for a single question. The dataset and each of its subsets generally are addressed separately, although some results are presented in summary tables or figures.

2. General Profile Query Results

The following sections provide the result of analyses to provide a general profile of the characteristics of the MCDU dataset.

2.1. Record Length

Record length is calculated from the first 5 character positions in the Leader of each MARC record.

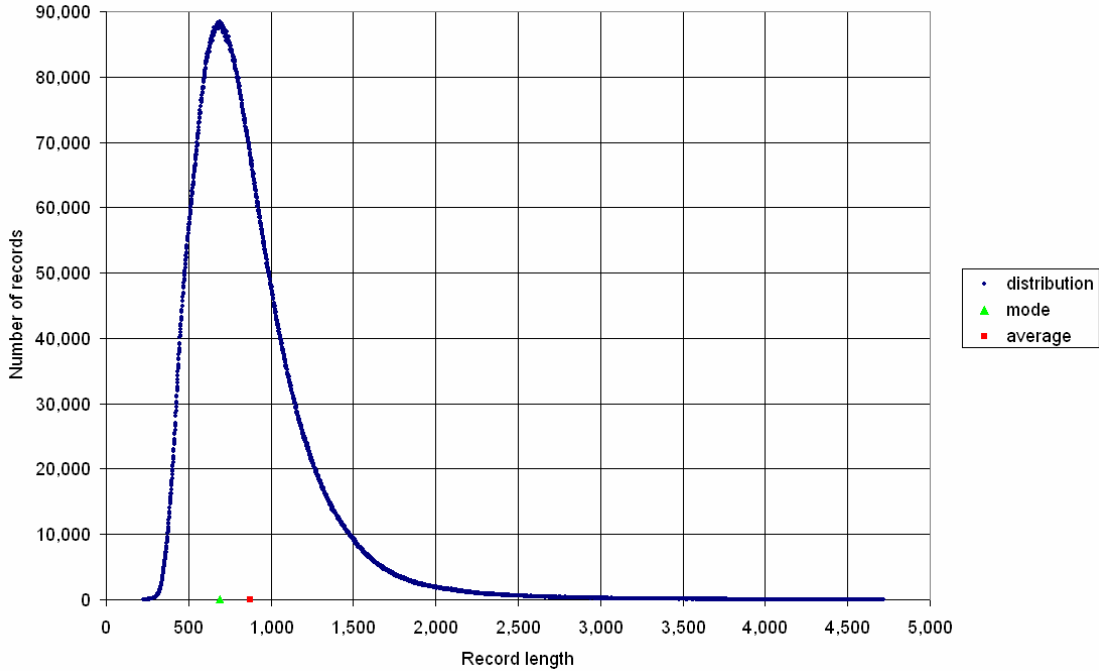
- Q01: What is the minimum record length?**
- Q02: What is the maximum record length?**
- Q03: What is the average record length?**
- Q04: What is the mode for the lengths of records?**

Table 2.1.1. Record Length Statistics

Set Name	Min	Mode	Average	Max	Set Name	Min	Mode	Average	Max
56M	226	689	874	4,719					
00_LC	232	794	943	4,698	00_nonLC	226	657	861	4,719
01_B_LC	265	783	918	4,694	01_B_nonLC	226	657	815	4,673
02_CM_LC	451	994	1,137	4,564	02_CM_nonLC	238	848	1,113	4,678
03_ER_LC	284	474	1,080	4,515	03_ER_nonLC	237	1,003	1,412	4,661
04_CR_LC	232	794	1,029	4,643	04_CR_nonLC	229	716	915	4,658
05_MS_LC	447	780	874	3,933	05_MS_nonLC	254	668	738	4,698
06_MU_LC	402	743	908	4,418	06_MU_nonLC	238	734	858	4,651
07_SR_LC	445	888	1,232	4,677	07_SR_nonLC	265	944	1,229	4,690
08_PM_LC	487	1,046	1,637	4,698	08_PM_nonLC	230	935	1,231	4,656
09_GM_LC	514	1,027	1,289	4,692	09_GM_nonLC	236	424	1,317	4,719
10_3D_LC	664	909	1,003	1,806	10_3D_nonLC	263	703	980	4,563

Q05: What is the distribution of the record lengths?

**Figure 2.1.1. Distribution of Record Lengths:
MCDU Project Dataset**



2.2. Record Status

Q06: What is the distribution of records by Record Status?

The tables in this section show the distribution of records by the Record Status Code, which can be found in the Leader/05. Note that one of the five Record Status codes defined by the *MARC 21 Format for Bibliographic Data*—d (Deleted)—is not defined in *OCLC Bibliographic Formats and Standards*.

Table 2.2.1. Distribution of Records by Record Status: MCDU Project Dataset

Record Status (05_RecStatus)	MCDU Project Dataset [Set 56M]	
	Number of Records	% of Total Records in the Dataset
A (Increase in encoding level)	484,494	0.86%
c (Corrected or revised)	39,452,893	70.23%
d (Deleted)	0	0%
n (New)	15,828,914	28.18%
p (Increase in encoding level from prepublication)	411,082	0.73%
TOTAL	56,177,383	100.00%

Table 2.2.2. Distribution of Records by Record Status: LC-Created Records Set

Record Status (05_RecStatus)	LC-Created Records [Set 00_LC]	
	Number of Records	% of Total Records in Set
a (Increase in encoding level)	440,169	5.05%
c (Corrected or revised)	6,266,723	71.92%
d (Deleted)	0	0%
n (New)	1,739,714	19.97%
p (Increase in encoding level from prepublication)	267,059	3.06%
TOTAL	8,713,665	100.00%

Table 2.2.3. Distribution of Records by Record Status: NonLC-Created Records Set

Record Status (05_RecStatus)	NonLC-Created Records [Set 00_nonLC]	
	Number of Records	% of Total Records in Set
a (Increase in encoding level)	44,325	0.09%
c (Corrected or revised)	33,186,170	69.92%
d (Deleted)	0	0%
n (New)	14,089,200	29.68%
p (Increase in encoding level from prepublication)	144,023	0.30%
TOTAL	47,463,718	100.00%

**Table 2.2.4. Distribution of Records by Record Status:
Books, Pamphlets, and Printed Sheets Subsets**

Record Status (05_RecStatus)	Books, Pamphlets, and Printed Sheets, LC-Created [Set 01_B_LC]		Books, Pamphlets, and Printed Sheets, nonLC-Created [Set 01_B_nonLC]	
	Number of Records	% of Total Records in Subset	Number of Records	% of Total Records in Subset
a (Increase in encoding level)	437,588	5.76%	43,277	0.13%
c (Corrected or revised)	5,275,418	69.45%	22,224,412	64.33%
d (Deleted)	0	0%	0	0%
n (New)	1,616,508	21.28%	12,135,076	35.13%
p (Increase in encoding level from prepublication)	266,373	3.51%	143,435	0.42%
TOTAL	7,595,887	100.00%	34,546,200	100.00%

**Table 2.2.5. Distribution of Records by Record Status:
Cartographic Materials Subsets**

Record Status (05_RecStatus)	Cartographic Materials, LC-Created [Set 02_CM_LC]		Cartographic Materials, nonLC-Created [Set 02_CM_nonLC]	
	Number of Records	% of Total Records in Subset	Number of Records	% of Total Records in Subset
A (Increase in encoding level)	30	0.01%	4	< 0.01%
C (Corrected or revised)	239,112	98.75%	521,648	87.43%
D (Deleted)	0	0%	0	0%
n (New)	2,950	1.22%	74,987	12.57%
p (Increase in encoding level from prepublication)	40	0.02%	3	< 0.01%
TOTAL	242,132	100.00%	596,642	100.00%

**Table 2.2.6. Distribution of Records by Record Status:
Electronic Resources Subsets**

Record Status (05_RecStatus)	Electronic Resources, LC-Created [Set 03_ER_LC]		Electronic Resources, nonLC-Created [Set 03_ER_nonLC]	
	Number of Records	% of Total Records in Subset	Number of Records	% of Total Records in Subset
A (Increase in encoding level)	19	0.05%	9	< 0.01%
C (Corrected or revised)	34,705	87.03%	798,386	91.57%
D (Deleted)	0	0%	0	0%
N (New)	5,132	12.87%	73,434	8.42%
P (Increase in encoding level from prepublication)	23	0.06%	52	0.01%
TOTAL	39,879	100.00%	871,881	100.00%

**Table 2.2.7. Distribution of Records by Record Status:
Continuing Resources Subsets**

Record Status (05_RecStatus)	Continuing Resources, LC-Created [Set 04_CR_LC]		Continuing Resources, nonLC-Created [Set 04_CR_nonLC]	
	Number of Records	% of Total Records in Subset	Number of Records	% of Total Records in Subset
a (Increase in encoding level)	2,080	0.54%	680	0.03%
c (Corrected or revised)	359,499	92.58%	1,826,388	83.28%
d (Deleted)	0	0%	0	0%
n (New)	26,199	6.75%	365,937	16.69%
p (Increase in encoding level from prepublication)	554	0.14%	4	< 0.01%
TOTAL	388,332	100.00%	2,193,009	100.00%

**Table 2.2.8. Distribution of Records by Record Status:
Manuscripts Subsets**

Record Status (05_RecStatus)	Manuscripts, LC-Created [Set 05_MS_LC]		Manuscripts, nonLC-Created [Set 05_MS_nonLC]	
	Number of Records	% of Total Records in Subset	Number of Records	% of Total Records in Subset
a (Increase in encoding level)	239	2.08%	3	< 0.01%
c (Corrected or revised)	10,572	92.16%	4,096,449	93.29%
d (Deleted)	0	0%	0	0%
n (New)	656	5.72%	294,518	6.71%
p (Increase in encoding level from prepublication)	4	0.03%	0	0%
TOTAL	11,471	100.00%	4,390,970	100.00%

**Table 2.2.9. Distribution of Records by Record Status:
Music Subsets**

Record Status (05_RecStatus)	Music, LC-Created [Set 06_MU_LC]		Music, nonLC-Created [Set 06_MU_nonLC]	
	Number of Records	% of Total Records in Subset	Number of Records	% of Total Records in Subset
a (Increase in encoding level)	79	0.07%	232	0.02%
c (Corrected or revised)	86,130	78.84%	797,570	68.31%
d (Deleted)	0	0%	0	0%
n (New)	22,975	21.03%	369,833	31.67%
p (Increase in encoding level from prepublication)	65	0.06%	19	< 0.01%
TOTAL	109,249	100.00%	1,167,654	100.00%

**Table 2.2.10. Distribution of Records by Record Status:
Sound Recordings Subsets**

Record Status (05_RecStatus)	Sound Recordings, LC-Created [Set 07_SR_LC]		Sound Recordings, nonLC-Created [Set 07_SR_nonLC]	
	Number of Records	% of Total Records in Subset	Number of Records	% of Total Records in Subset
a (Increase in encoding level)	103	0.04%	69	< 0.01%
c (Corrected or revised)	203,186	83.98%	1,392,643	81.81%
d (Deleted)	0	0%	0	0%
n (New)	38,651	15.98%	309,619	18.19%
p (Increase in encoding level from prepublication)	0	0.00%	11	< 0.01%
TOTAL	241,940	100.00%	1,702,342	100.00%

**Table 2.2.11. Distribution of Records by Record Status:
Projected Media Subsets**

Record Status (05_RecStatus)	Projected Media, LC-Created [Set 08_PM_LC]		Projected Media, nonLC-Created [Set 08_PM_nonLC]	
	Number of Records	% of Total Records in Subset	Number of Records	% of Total Records in Subset
A (Increase in encoding level)	30	0.14%	47	< 0.01%
C (Corrected or revised)	13,308	60.25%	1,077,295	76.10%
d (Deleted)	0	0%	0	0%
n (New)	8,750	39.61%	337,772	23.86%
p (Increase in encoding level from prepublication)	0	0.00%	492	0.04%
TOTAL	22,088	100.00%	1,415,606	100.00%

**Table 2.2.12. Distribution of Records by Record Status:
Graphic Materials Subsets**

Record Status (05_RecStatus)	Graphic Materials, LC-Created [Set 09_GM_LC]		Graphic Materials, nonLC-Created [Set 09_GM_nonLC]	
	Number of Records	% of Total Records in Subset	Number of Records	% of Total Records in Subset
a (Increase in encoding level)	1	< 0.01%	4	< 0.01%
c (Corrected or revised)	44,750	71.46%	406,007	80.18%
d (Deleted)	0	0%	0	0%
n (New)	17,874	28.54%	100,390	19.82%
p (Increase in encoding level from prepublication)	0	0%	0	0%
TOTAL	62,625	100.00%	506,401	100.00%

**Table 2.2.13. Distribution of Records by Record Status:
Three Dimensional Objects and Realia Subsets**

Record Status (05_RecStatus)	Three Dimensional Objects and Realia, LC-Created [Set 10_3D_LC]		Three Dimensional Objects and Realia, nonLC-Created [Set 10_3D_nonLC]	
	Number of Records	% of Total Records in Subset	Number of Records	% of Total Records in Subset
A (Increase in encoding level)	0	0.00%	0	0.00%
c (Corrected or revised)	43	69.35%	45,372	62.14%
d (Deleted)	0	0.00%	0	0.00%
n (New)	19	30.65%	27,634	37.85%
p (Increase in encoding level from prepublication)	0	0.00%	7	0.01%
TOTAL	62	100.00%	73,013	100.00%

Q07: What is the distribution of records by Record Status and Type of Record?

The tables in this section show the distribution of records by the Record Status Code, which can be found in the Leader/05 and by Type of Record Code, which is found in the Leader/06. Note that one of the five Record Status codes defined by the *MARC 21 Format for Bibliographic Data*—d (Deleted)—is not defined in *OCLC Bibliographic Formats and Standards*. Four of the project-defined formats include only one record type; as the results for these subsets do not differ from those presented with Q06, no tables are needed for these cases.

**Table 2.2.14. Distribution of Records by Record Status and Type of Record,
As a Percentage of Each Type of Record:
MCDU Project Dataset**

[Set 56M]					
Type of Record (06_RecType)	Record Status (05_RecStatus)				
	a (Increase in encoding level)	c (Corrected or revised)	d (Deleted)	n (New)	p (Increase in encoding level from prepublication)
A (Language material)	1.07%	66.72%	0%	31.31%	0.91%
c (Notated music)	0.02%	68.59%	0%	31.39%	0.01%
d (Manuscript notated music)	0.13%	81.79%	0%	18.09%	0%
e (Cartographic material)	< 0.01%	90.69%	0%	9.31%	0.01%
f (Manuscript cartographic material)	0%	96.46%	0%	3.54%	0%
g (Projected medium)	0.01%	75.87%	0%	24.09%	0.03%
i (Nonmusical sound recording)	0.01%	84.83%	0%	15.16%	0.00%
j (Musical sound recording)	0.01%	80.90%	0%	19.09%	0%
k (Two-dimensional nonprojectable graphic)	< 0.01%	81.15%	0%	18.85%	0%
m (Computer file)	< 0.01%	94.78%	0%	5.21%	0.01%
o (Kit)	< 0.01%	67.93%	0%	32.04%	0.02%
p (Mixed material)	0%	78.07%	0%	21.94%	0%
r (Three-dimensional artifact or naturally occurring object)	0%	58.00%	0%	42.00%	0%
t (Manuscript language material)	0.01%	93.27%	0%	6.72%	0%
Percentage of all records in the dataset	0.86%	70.23%	0%	28.18%	0.73%

**Table 2.2.15. Distribution of Records by Record Status and Type of Record,
As a Percentage of Each Type of Record:
LC-Created Records Set**

[Set 00_LC]					
Type of Record (06_RecType)	Record Status (05_RecStatus)				
	A (Increase in encoding level)	c (Corrected or revised)	d (Deleted)	n (New)	p (Increase in encoding level from prepublication)
A (Language material)	5.49%	70.63%	0%	20.55%	3.33%
C (Notated music)	0.07%	79.31%	0%	20.55%	0.06%
d (Manuscript notated music)	0%	60.69%	0%	39.31%	0.00%
e (Cartographic material)	0.01%	98.74%	0%	1.23%	0.02%
f (Manuscript cartographic material)	0%	98.98%	0%	1.02%	0%
g (Projected medium)	0.14%	60.26%	0%	39.61%	0%
i (Nonmusical sound recording)	0.09%	70.21%	0%	29.70%	0%
j (Musical sound recording)	0.03%	87.13%	0%	12.83%	0%
k (Two-dimensional nonprojectable graphic)	< 0.01%	71.17%	0%	28.83%	0%
m (Computer file)	0.05%	85.10%	0%	14.72%	0.14%
o (Kit)	0%	67.24%	0%	32.76%	0%
p (Mixed material)	0%	87.78%	0%	12.23%	0%
r (Three-dimensional artifact or naturally occurring object)	0%	100.00%	0%	0%	0%
t (Manuscript language material)	2.08%	92.17%	0%	5.72%	0.04%
Percentage of all records in the set	5.05%	71.92%	0%	19.97%	3.07%

Table 2.2.16 Distribution of Records by Record Status and Type of Record, As a Percentage of Each Type of Record: nonLC-Created Records Set

[Set 00_nonLC]					
Record Type (06_RecType)	Record Status (05_RecStatus)				
	A (Increase in encoding level)	c (Corrected or revised)	d (Deleted)	n (New)	p (Increase in encoding level from prepublication)
a (Language material)	0.12%	65.87%	0%	33.62%	0.38%
c (Notated music)	0.01%	67.56%	0%	32.43%	< 0.01%
d (Manuscript notated music)	0.13%	82.75%	0%	17.12%	0%
e (Cartographic material)	< 0.01%	87.43%	0%	12.57%	< 0.01%
f (Manuscript cartographic material)	0%	96.03%	0%	3.97%	0%
g (Projected medium)	< 0.01%	76.12%	0%	23.85%	0.03%
i (Nonmusical sound recording)	0%	86.14%	0%	13.86%	< 0.01%
j (Musical sound recording)	0.01%	79.88%	0%	20.11%	< 0.01%
k (Two-dimensional nonprojectable graphic)	< 0.01%	83.36%	0%	16.64%	0%
m (Computer file)	< 0.01%	95.33%	0%	4.67%	0%
o (Kit)	< 0.01%	67.94%	0%	32.04%	0.02%
p (Mixed material)	0%	78.02%	0%	21.98%	0%
r (Three-dimensional artifact or naturally occurring object)	0%	57.99%	0%	42.01%	0%
t (Manuscript language material)	< 0.01%	93.27%	0%	6.73%	0%
Percentage of all records in the set	0.09%	69.92%	0%	29.68%	0.30%

2.3. Type of Record

Q08. What is the distribution of records by Type of Record?

The tables in this section show the distribution of records by the Type of Record Code, which can be found in the Leader/06. Note that four of the project-defined formats include only one Type of Record code:

- Each of the Book, Pamphlets, and Printed Sheets subsets includes only one Record Type—**a** (Language Material)—therefore, 100% of the records in each set are coded **a**.
- Each of the Continuing Resources subsets includes only one Record Type—**a** (Language Material)—therefore, 100% of the records in each set are coded **a**.
- Each of the Manuscripts subsets includes only one Record Type—**t** (Manuscript Language Material)—therefore, 100% of the records in each set are coded **t**.

- Each of the Projected Media subsets includes only one Record Type—**g** (Projected Medium)—therefore, 100% of the records in each set are coded **g**.

**Table 2.3.1. Distribution of Records by Type of Record:
MCDU Project Dataset**

[Set 56M]		
Type of Record (06_RecType)	Number of Records	% of Total Records in Dataset
a (Language material)	45,367,910	80.76%
c (Notated music)	1,215,085	2.16%
d (Manuscript notated music)	63,297	0.11%
e (Cartographic material)	837,891	1.49%
f (Manuscript cartographic material)	14,023	0.03%
g (Projected medium)	1,439,476	2.56%
i (Nonmusical sound recording)	547,495	0.98%
j (Musical sound recording)	1,398,763	2.49%
k (Two-dimensional nonprojectable graphic)	340,497	0.61%
m (Computer file)	226,334	0.40%
o (Kit)	30,843	0.06%
p (Mixed material)	248,293	0.44%
r (Three-dimensional artifact or naturally occurring object)	42,348	0.08%
t (Manuscript language material)	4,405,128	7.84%
TOTAL	56,177,383	100.00%

**Table 2.3.2. Distribution of Records by Type of Record:
LC-Created Records Set**

[Set 00 LC]		
Type of Record (06_RecType)	Number of Records	% of Total Records in Set
a (Language material)	8,010,860	91.93%
c (Notated music)	106,485	1.22%
d (Manuscript notated music)	2,768	0.03%
e (Cartographic material)	241,024	2.77%
f (Manuscript cartographic material)	2,055	0.02%
g (Projected medium)	22,106	0.25%
i (Nonmusical sound recording)	45,055	0.52%
j (Musical sound recording)	196,886	2.26%
k (Two-dimensional nonprojectable graphic)	61,728	0.71%
m (Computer file)	12,110	0.14%
o (Kit)	58	< 0.01%
p (Mixed material)	1,047	0.01%
r (Three-dimensional artifact or naturally occurring object)	4	< 0.01%
t (Manuscript language material)	11,479	0.13%
TOTAL	8,713,665	100.00%

**Table 2.3.3. Distribution of Records by Type of Record:
nonLC-Created Records Set**

[Set 00_nonLC]		
Type of Record (06_RecType)	Number of Records	% of Total Records in Set
a (Language material)	37,357,050	78.71%
c (Notated music)	1,108,600	2.34%
d (Manuscript notated music)	60,529	0.13%
e (Cartographic material)	596,867	1.26%
f (Manuscript cartographic material)	11,968	0.03%
g (Projected medium)	1,417,370	2.99%
i (Nonmusical sound recording)	502,440	1.06%
j (Musical sound recording)	1,201,877	2.53%
k (Two-dimensional nonprojectable graphic)	278,769	0.59%
m (Computer file)	214,224	0.45%
o (Kit)	30,785	0.06%
p (Mixed material)	247,246	0.52%
r (Three-dimensional artifact or naturally occurring object)	42,344	0.09%
t (Manuscript language material)	4,393,649	9.26%
TOTAL	47,463,718	100.00%

**Table 2.3.4. Distribution of Records by Type of Record:
Cartographic Materials Subsets**

Type of Record (06_RecType)	Cartographic Materials, LC- Created [Set 02_CM_LC]		Cartographic Materials, nonLC- Created [Set 02_CM_nonLC]	
	Number of Records	% of Total Records in Subset	Number of Records	% of Total Records in Subset
e (Cartographic material)	240,077	99.15%	584,704	98.00%
f (Manuscript cartographic material)	2,055	0.85%	11,938	2.00%
TOTAL	242,132	100.00%	596,642	100.00%

**Table 2.3.5. Distribution of Records by Type of Record:
Electronic Resources Subsets**

Type of Record (06_RecType)	Electronic Resources, LC- Created [Set 03_ER_LC]		Electronic Resources, nonLC- Created [Set 03_ER_nonLC]	
	Number of Records	% of Total Records in Subset	Number of Records	% of Total Records in Subset
a (Language material)	26,641	66.81%	617,841	70.86%
c (Notated music)	4	0.01%	1,455	0.17%
d (Manuscript notated music)	0	0%	20	< 0.01%
e (Cartographic material)	947	2.38%	12,163	1.40%
f (Manuscript cartographic material)	0	0%	30	< 0.01%
g (Projected medium)	18	0.05%	1,764	0.20%
i (Nonmusical sound recording)	1	< 0.01%	603	0.07%
j (Musical sound recording)	0	0%	1,372	0.16%
k (Two-dimensional nonprojectable graphic)	150	0.38%	19,527	2.24%
m (Computer file)	12,110	30.37%	214,224	24.57%
o (Kit)	0	0%	110	0.01%
p (Mixed material)	0	0%	87	0.01%
r (Three-dimensional artifact or naturally occurring object)	0	0%	6	< 0.01%
t (Manuscript language material)	8	0.02%	2,679	0.31%
TOTAL	39,879	100.00%	871,881	100.00%

**Table 2.3.6. Distribution of Records by Type of Record:
Music Subsets**

Type of Record (06_RecType)	Music, LC-Created [Set 06_MU_LC]		Music, nonLC-Created [Set 06_MU_nonLC]	
	Number of Records	% of Total Records in Subset	Number of Records	% of Total Records in Subset
c (Notated music)	106,481	97.47%	1,107,145	94.82%
d (Manuscript notated music)	2,768	2.53%	60,509	5.18%
TOTAL	109,249	100.00%	1,167,654	100.00%

**Table 2.3.7. Distribution of Records by Type of Record:
Sound Recordings Subsets**

Type of Record (06_RecType)	Sound Recordings, LC-Created [Set 07_SR_LC]		Sound Recordings, nonLC-Created [Set 07_SR_nonLC]	
	Number of Records	% of Total Records in Subset	Number of Records	% of Total Records in Subset
i (Nonmusical sound recording)	45,054	18.62%	501,837	29.48%
j (Musical sound recording)	196,886	81.38%	1,200,505	70.52%
TOTAL	241,940	100.00%	1,702,342	100.00%

**Table 2.3.8. Distribution of Records by Type of Record:
Graphic Materials Subsets**

Type of Record (06_RecType)	Graphic Materials, LC-Created [Set 09_GM_LC]		Graphic Materials, nonLC-Created [Set 09_GM_nonLC]	
	Number of Records	% of Total Records in Subset	Number of Records	% of Total Records in Subset
k (Two-dimensional nonprojectable graphic)	61,578	98.33%	259,242	51.19%
p (Mixed material)	1,047	1.67%	247,159	48.81%
TOTAL	62,625	100.00%	506,401	100.00%

**Table 2.3.9. Distribution of Records by Type of Record:
Three Dimensional Objects and Realia Subsets**

Type of Record (06_RecType)	Three Dimensional Objects and Realia, LC-Created [Set 10_3D_LC]		Three Dimensional Objects and Realia, nonLC-Created [Set 10_3D_nonLC]	
	Number of Records	% of Total Records in Subset	Number of Records	% of Total Records in Subset
o (Kit)	58	93.55%	30,675	42.01%
r (Three-dimensional artifact or naturally occurring object)	4	6.45%	42,338	57.99%
TOTAL	62	100.00%	73,013	100.00%

2.4. Bibliographic Level

Q09. What is the distribution of records by Bibliographic Level?

The tables below show the distribution of records by Bibliographic Level, coded in Leader/07.

N.B. The Bibliographic Level code **i** (Integrating resource) was defined in *MARC 21 Format for Bibliographic Data* as a code value in 2001. However, at the time of providing the records in the MCDU dataset, OCLC had not yet implemented the use of this code. Therefore, the results of our analyses include no records with the Bibliographic Level (Leader/07) coded as **i**.

**Table 2.4.1. Distribution of Records by Bibliographic Level:
MCDU Project Dataset**

[Set 56M]		
Bibliographic Level (07_BibLevel)	Number of Records	% of Total Records in Dataset
A (Monographic component part)	610,470	1.09%
B (Serial component part)	2,693	< 0.01%
C (Collection)	352,470	0.63%
D (Subunit)	69,463	0.12%
I (Integrating Resource)	0	0%
m (Monograph/item)	52,482,296	93.42%
s (Serial)	2,659,991	4.74%
TOTAL	56,177,383	100.00%

**Table 2.4.2. Distribution of Records by Bibliographic Level:
LC-Created Records Set**

[Set 00_LC]		
Bibliographic Level (07_BibLevel)	Number of Records	% of Total Records in Set
a (Monographic component part)	10,690	0.12%
b (Serial component part)	4	< 0.01%
c (Collection)	7,747	0.09%
d (Subunit)	12,831	0.15%
i (Integrating Resource)	0	0%
m (Monograph/item)	8,283,645	95.06%
s (Serial)	398,748	4.58%
TOTAL	8,713,665	100.00%

**Table 2.4.3. Distribution of Records by Bibliographic Level:
nonLC-Created Records Set**

[Set 00_nonLC]		
Bibliographic Level (07_BibLevel)	Number of Records	% of Total Records in Set
a (Monographic component part)	599,780	1.26%
b (Serial component part)	2,689	0.01%
c (Collection)	344,723	0.73%
d (Subunit)	56,632	0.12%
i (Integrating Resource)	0	0.00%
m (Monograph/item)	44,198,651	93.12%
s (Serial)	2,261,243	4.76%
TOTAL	47,463,718	100.00%

**Table 2.4.4. Distribution of Records by Bibliographic Level:
Books, Pamphlets, and Printed Sheets Subsets**

Bibliographic Level (07_BibLevel)	Books, Pamphlets, and Printed Sheets, LC-Created [Set 01_B_LC]		Books, Pamphlets, and Printed Sheets, nonLC-Created [Set 01_B_nonLC]	
	Number of Records	% of Total Records in Subset	Number of Records	% of Total Records in Subset
a (Monographic component part)	9,287	0.12%	533,979	1.55%
b (Serial component part)	0	0%	0	0%
c (Collection)	5,361	0.07%	66,645	0.19%
d (Subunit)	6	< 0.01%	698	< 0.01%
i (Integrating Resource)	0	0%	0	0%
m (Monograph/item)	7,581,233	99.81%	33,944,878	98.26%
s (Serial)	0	0%	0	0%
TOTAL	7,595,887	100.00%	34,546,200	100.00%

**Table 2.4.5. Distribution of Records by Bibliographic Level:
Cartographic Materials Subsets**

Bibliographic Level (07_BibLevel)	Cartographic Materials, LC-Created [Set 02_CM_LC]		Cartographic Materials, nonLC-Created [Set 02_CM_nonLC]	
	Number of Records	% of Total Records in Subset	Number of Records	% of Total Records in Subset
a (Monographic component part)	33	0.01%	1,788	0.30%
b (Serial component part)	1	< 0.01%	36	0.01%
c (Collection)	32	0.01%	1,854	0.31%
d (Subunit)	0	0%	126	0.02%
i (Integrating Resource)	0	0%	0	0%
m (Monograph/item)	241,799	99.86%	587,491	98.47%
s (Serial)	267	0.11%	5,347	0.90%
TOTAL	242,132	100.00%	596,642	100.00%

**Table 2.4.6. Distribution of Records by Bibliographic Level:
Electronic Resources Subsets**

Bibliographic Level (07_BibLevel)	Electronic Resources, LC-Created [Set 03_ER_LC]		Electronic Resources, nonLC-Created [Set 03_ER_nonLC]	
	Number of Records	% of Total Records in Subset	Number of Records	% of Total Records in Subset
a (Monographic component part)	5	0.01%	49,220	5.65%
b (Serial component part)	0	0.00%	1,710	0.20%
c (Collection)	30	0.08%	815	0.09%
d (Subunit)	0	0.00%	6,330	0.73%
i (Integrating Resource)	0	0.00%	0	0.00%
m (Monograph/item)	29,768	74.65%	751,522	86.20%
s (Serial)	10,076	25.27%	62,284	7.14%
TOTAL	39,879	100.00%	871,881	100.00%

**Table 2.4.7. Distribution of Records by Bibliographic Level:
Continuing Resources Subsets**

Bibliographic Level (07_BibLevel)	Continuing Resources, LC-Created [Set 04_CR_LC]		Continuing Resources, nonLC-Created [Set 04_CR_nonLC]	
	Number of Records	% of Total Records in Subset	Number of Records	% of Total Records in Subset
A (Monographic component part)	0	0.000%	0	0.00%
b (Serial component part)	3	0.001%	942	0.04%
c (Collection)	0	0.000%	0	0.00%
d (Subunit)	0	0.000%	0	0.00%
i (Integrating Resource)	0	0.000%	0	0.00%
m (Monograph/item)	0	0.000%	0	0.00%
s (Serial)	388,329	99.999%	2,192,067	99.96%
TOTAL	388,332	100.000%	2,193,009	100.00%

**Table 2.4.8. Distribution of Records by Bibliographic Level:
Manuscripts Subsets**

Bibliographic Level (07_BibLevel)	Manuscripts, LC-Created [Set 05_MS_LC]		Manuscripts, nonLC-Created [Set 05_MS_nonLC]	
	Number of Records	% of Total Records in Subset	Number of Records	% of Total Records in Subset
a (Monographic component part)	5	0.04%	2,850	0.06%
b (Serial component part)	0	0%	0	0%
c (Collection)	33	0.29%	31,344	0.71%
d (Subunit)	0	0%	6,109	0.14%
i (Integrating Resource)	0	0%	0	0%
m (Monograph/item)	11,433	99.67%	4,350,666	99.08%
s (Serial)	0	0%	1	< 0.01%
TOTAL	11,471	100.00%	4,390,970	100.00%

**Table 2.4.9. Distribution of Records by Bibliographic Level:
Music Subsets**

Bibliographic Level (07_BibLevel)	Music, LC-Created [Set 06_MU_LC]		Music, nonLC-Created [Set 06_MU_nonLC]	
	Number of Records	% of Total Records in Subset	Number of Records	% of Total Records in Subset
a (Monographic component part)	161	0.15%	9,349	0.80%
b (Serial component part)	0	0.00%	0	0.00%
c (Collection)	58	0.05%	2,681	0.23%
d (Subunit)	0	0.00%	798	0.07%
i (Integrating Resource)	0	0.00%	0	0.00%
m (Monograph/item)	109,014	99.78%	1,154,742	98.89%
s (Serial)	16	0.01%	84	0.01%
TOTAL	109,249	100.00%	1,167,654	100.00%

**Table 2.4.10. Distribution of Records by Bibliographic Level:
Sound Recordings Subsets**

Bibliographic Level (07_BibLevel)	Sound Recordings, LC-Created [Set 07_SR_LC]		Sound Recordings, nonLC-Created [Set 07_SR_nonLC]	
	Number of Records	% of Total Records in Subset	Number of Records	% of Total Records in Subset
A (Monographic component part)	15	0.01%	713	0.04%
b (Serial component part)	0	0.00%	0	0.00%
c (Collection)	206	0.09%	3,990	0.23%
d (Subunit)	0	0.00%	206	0.01%
i (Integrating Resource)	0	0.00%	0	0.00%
m (Monograph/item)	241,663	99.89%	1,696,395	99.65%
s (Serial)	56	0.02%	1,038	0.06%
TOTAL	241,940	100.00%	1,702,342	100.00%

**Table 2.4.11. Distribution of Records by Bibliographic Level:
Projected Media Subsets**

Bibliographic Level (07_BibLevel)	Projected Media, LC-Created [Set 08_PM_LC]		Projected Media, nonLC-Created [Set 08_PM_nonLC]	
	Number of Records	% of Total Records in Subset	Number of Records	% of Total Records in Subset
a (Monographic component part)	0	0%	511	0.04%
b (Serial component part)	0	0%	1	< 0.01%
c (Collection)	16	0.07%	14,966	1.06%
d (Subunit)	1	0.01%	288	0.02%
i (Integrating Resource)	0	0%	0	0%
m (Monograph/item)	22,067	99.91%	1,399,452	98.86%
s (Serial)	4	0.02%	388	0.03%
TOTAL	22,088	100.00%	1,415,606	100.00%

**Table 2.4.12. Distribution of Records by Bibliographic Level:
Graphic Materials Subsets**

Bibliographic Level (07_BibLevel)	Graphic Materials, LC-Created [Set 09_GM_LC]		Graphic Materials, nonLC-Created [Set 09_GM_nonLC]	
	Number of Records	% of Total Records in Subset	Number of Records	% of Total Records in Subset
a (Monographic component part)	1,184	1.89%	1,142	0.23%
b (Serial component part)	0	0.00%	0	0%
c (Collection)	2,009	3.21%	221,718	43.78%
d (Subunit)	12,824	20.48%	42,056	8.31%
i (Integrating Resource)	0	0.00%	0	0%
m (Monograph/item)	46,608	74.42%	241,465	47.68%
s (Serial)	0	0.00%	20	< 0.01%
TOTAL	62,625	100.00%	506,401	100.00%

**Table 2.4.13. Distribution of Records by Bibliographic Level:
Three Dimensional Objects and Realia Subsets**

Bibliographic Level (07_BibLevel)	Three Dimensional Objects and Realia, LC-Created [Set 10_3D_LC]		Three Dimensional Objects and Realia, nonLC-Created [Set 10_3D_nonLC]	
	Number of Records	% of Total Records in Subset	Number of Records	% of Total Records in Subset
a (Monographic component part)	0	0.00%	228	0.31%
b (Serial component part)	0	0.00%	0	0.00%
c (Collection)	2	3.23%	710	0.97%
d (Subunit)	0	0.00%	21	0.03%
i (Integrating Resource)	0	0.00%	0	0.00%
m (Monograph/item)	60	96.77%	72,040	98.67%
s (Serial)	0	0.00%	14	0.02%
TOTAL	62	100.00%	73,013	100.00%

Q10. What is the distribution of records by Bibliographic Level and Type of Record?

The following tables show the distribution of records Bibliographic Level and Type of Record in the MCDU dataset and each of the two sets of LC-created and non-LC-created records.

**Table 2.4.14. Distribution of Type of Record and Bibliographic Level,
As a Percentage of Each Type of Record:
MCDU Project Dataset**

[Set 56M]							
Type of Record (06_RecType)	Bibliographic Level (07_BibLevel)						
	a (Monographic component part)	b (Serial component part)	c (Collection)	d (Subunit)	i (Integrating Resource)	m (Monograph/ item)	s (Serial)
a (Language Material)	1.29%	< 0.01%	0.16%	< 0.01%	0%	92.71%	5.83%
c (Notated Music)	0.75%	0%	0.14%	0.01%	0%	99.08%	0.01%
d (Manuscript Notated Music)	0.58%	0%	1.56%	0.99%	0%	96.87%	0%
e (Cartographic Material)	0.87%	< 0.01%	0.21%	< 0.01%	0%	98.25%	0.67%
f (Manuscript Cartographic Material)	0.95%	0%	1.15%	0.85%	0%	97.06%	0%
g (Projected Medium)	0.04%	0%	1.04%	0.02%	0%	98.88%	0.03%
i (Nonmusical Sound Recording)	0.03%	0%	0.35%	0.03%	0%	99.41%	0.19%
j (Musical Sound Recording)	0.04%	0%	0.17%	< 0.01%	0%	99.78%	0.01%
k (Two- Dimensional Nonprojectable Graphic)	0.74%	0%	6.99%	5.80%	0%	86.47%	0.01%
m (Computer File)	0.47%	0.36%	0.08%	2.71%	0%	93.79%	2.60%
o (Kit)	0.01%	0%	1.50%	< 0.01%	0%	98.45%	0.04%
p (Mixed Material)	0.30%	0%	80.61%	14.15%	0%	4.94%	0%
r (Three- Dimensional Artifact or Naturally Occurring Object)	0.53%	0%	0.59%	0.05%	0%	98.83%	< 0.01%

[Set 56M]							
Type of Record (06_RecType)	Bibliographic Level (07_BibLevel)						
	a (Monographic component part)	b (Serial component part)	c (Collection)	d (Subunit)	i (Integrating Resource)	m (Monograph/item)	s (Serial)
t (Manuscript Language Material)	0.07%	0%	0.71%	0.14%	0%	99.08%	0%
Percentage of all records in dataset	1.09%	0.01%	0.63%	0.12%	0%	93.42%	4.74%

Table 2.4.15. Distribution of Type of Record and Bibliographic Level, As a Percentage of Each Type of Record: LC-Created Records Set

[Set 00_LC]							
Type of Record (06_RecType)	Bibliographic Level (07_BibLevel)						
	a (Monographic component part)	b (Serial component part)	c (Collection)	d (Subunit)	i (Integrating Resource)	m (Monograph/item)	s (Serial)
a (Language Material)	0.12%	0%	0.07%	0%	0%	94.85%	4.97%
c (Notated Music)	0.01%	0%	0.05%	0%	0%	99.92%	0.02%
D (Manuscript Notated Music)	5.35%	0%	0.25%	0%	0%	94.40%	0%
E (Cartographic Material)	0.01%	0%	0.01%	0%	0%	99.87%	0.11%
f (Manuscript Cartographic Material)	0%	0%	0.58%	0%	0%	99.42%	0%
g (Projected Medium)	0%	0%	0.07%	0.01%	0%	99.91%	0.02%
i (Nonmusical Sound Recording)	< 0.01%	0%	0.10%	0%	0%	99.79%	0.11%
j (Musical Sound Recording)	0.01%	0%	0.08%	0%	0%	99.91%	0.00%
k (Two-Dimensional Nonprojectable Graphic)	1.92%	0%	1.58%	20.78%	0%	75.73%	0%
m (Computer File)	0.03%	0%	0.22%	0%	0%	94.24%	5.52%

[Set 00_LC]							
Type of Record (06_RecType)	Bibliographic Level (07_BibLevel)						
	a (Monographic component part)	b (Serial component part)	c (Collection)	d (Subunit)	i (Integrating Resource)	m (Monograph/item)	s (Serial)
o (Kit)	0%	0%	0.00%	0%	0%	100.00%	0%
p (Mixed Material)	0%	0%	99.05%	0%	0%	0.96%	0%
r (Three-Dimensional Artifact or Naturally Occurring Object)	0%	0%	50.00%	0%	0%	50.00%	0%
t (Manuscript Language Material)	0.04%	0%	0.29%	0%	0%	99.67%	0%
Percentage of all records in set	0.12%	0%	0.09%	0.15%	0%	95.07%	4.58%

Table 2.4.16. Distribution of Type of Record and Bibliographic Level, As a Percentage of Each Type of Record: nonLC-Created Records Set

[Set 00_nonLC]							
Type of Record (06_RecType)	Bibliographic Level (07_BibLevel)						
	a (Monographic component part)	b (Serial component part)	c (Collection)	d (Subunit)	i (Integrating Resource)	m (Monograph/item)	s (Serial)
a (Language Material)	1.54%	< 0.01%	0.18%	0.01%	0%	92.25%	6.02%
c (Notated Music)	0.82%	0%	0.15%	0.02%	0%	99.00%	< 0.01%
d (Manuscript Notated Music)	0.36%	0%	1.62%	1.04%	0%	96.98%	0%
e (Cartographic Material)	1.21%	< 0.01%	0.29%	0.01%	0%	97.60%	0.90%
f (Manuscript Cartographic Material)	1.11%	0%	1.25%	0.99%	0%	96.65%	0%
g (Projected Medium)	0.04%	0%	1.06%	0.02%	0%	98.86%	0.03%

[Set 00_nonLC]							
Type of Record (06_RecType)	Bibliographic Level (07_BibLevel)						
	a (Monographic component part)	b (Serial component part)	c (Collection)	d (Subunit)	i (Integrating Resource)	m (Monograph/item)	s (Serial)
i (Nonmusical Sound Recording)	0.03%	0%	0.37%	0.04%	0%	99.38%	0.19%
j (Musical Sound Recording)	0.05%	0%	0.18%	0.01%	0%	99.76%	< 0.01%
k (Two- Dimensional Nonprojectable Graphic)	0.48%	0%	8.19%	2.48%	0%	88.84%	< 0.01%
m (Computer File)	0.49%	0.38%	0.07%	2.87%	0%	93.76%	2.44%
o (Kit)	0.01%	0%	1.50%	0.01%	0%	98.44%	0.04%
p (Mixed Material)	0.30%	0%	80.53%	14.21%	0%	4.96%	0%
r (Three- Dimensional Artifact or Naturally Occurring Object)	0.53%	0%	0.59%	0.05%	0%	98.83%	< 0.01%
t (Manuscript Language Material)	0.07%	0%	0.72%	0.14%	0%	99.08%	0%
Percentage of all records in set	1.26%	< 0.01%	0.73%	0.12%	0%	93.12%	4.76%

2.5. Type of Control

Q11. What is the distribution of records by Type of Control?

The following tables show the distribution of records in each set by Type of Control code, which is found in the Leader/08.

**Table 2.5.1. Distribution of Records by Type of Control:
MCDU Project Dataset**

[Set 56M]		
Type of Control (08_ContrType)	Number of Records	% of Total Records in Dataset
# (No specified type)	56,007,518	99.7
A (Archival)	169,865	0.3
TOTAL	56,177,383	100.0

**Table 2.5.2. Distribution of Records by Type of Control:
LC-Created Records Set**

[Set 00 LC]		
Type of Control (08_ContrType)	Number of Records	% of Total Records in Set
# (No specified type)	8,712,883	99.99%
A (Archival)	782	0.01%
TOTAL	8,713,665	100.00%

**Table 2.5.3. Distribution of Records by Type of Control:
nonLC-Created Records Set**

[Set 00 nonLC]		
Type of Control (08_ContrType)	Number of Records	% of Total Records in Set
# (No specified type)	47,294,635	99.64%
a (Archival)	169,083	0.36%
TOTAL	47,463,718	100.00%

**Table 2.5.4. Distribution of Records by Type of Control:
Books, Pamphlets, and Printed Sheets Subsets**

Type of Control (08_ContrType)	Books, Pamphlets, and Printed Sheets, LC-Created [Set 01_B_LC]		Books, Pamphlets, and Printed Sheets, nonLC-Created [Set 01_B_nonLC]	
	Number of Records	% of Total Records in Subset	Number of Records	% of Total Records in Subset
# (No specified type)	7,595,811	~ 100.00%	34,525,931	99.94%
a (Archival)	76	< 0.01%	20,269	0.06%
TOTAL	7,595,887	100.00%	34,546,200	100.00%

**Table 2.5.5. Distribution of Records by Type of Control:
Cartographic Materials Subsets**

Type of Control (08_ContrType)	Cartographic Materials, LC-Created [Set 02_CM_LC]		Cartographic Materials, nonLC-Created [Set 02_CM_nonLC]	
	Number of Records	% of Total Records in Subset	Number of Records	% of Total Records in Subset
# (No specified type)	242,129	~ 100.00%	594,958	99.72%
A (Archival)	3	< 0.01%	1,684	0.28%
TOTAL	242,132	100.00%	596,642	100.00%

**Table 2.5.6. Distribution of Records by Type of Control:
Electronic Resources Subsets**

Type of Control (08_ContrType)	Electronic Resources, LC-Created [Set 03_ER_LC]		Electronic Resources, nonLC-Created [Set 03_ER_nonLC]	
	Number of Records	% of Total Records in Subset	Number of Records	% of Total Records in Subset
# (No specified type)	39,879	100.00%	871,726	99.98%
a (Archival)	0	0%	155	0.02%
TOTAL	39,879	100.00%	871,881	100.00%

**Table 2.5.7. Distribution of Records by Type of Control:
Continuing Resources Subsets**

Type of Control (08_ContrType)	Continuing Resources, LC-Created [Set 04_CR_LC]		Continuing Resources, nonLC-Created [Set 04_CR_nonLC]	
	Number of Records	% of Total Records in Subset	Number of Records	% of Total Records in Subset
# (No specified type)	388,330	~ 100.00%	2,191,972	99.95%
A (Archival)	2	< 0.01%	1,037	0.05%
TOTAL	388,332	100.000%	2,193,009	100.00%

**Table 2.5.8. Distribution of Records by Type of Control:
Manuscripts Subsets**

Type of Control (08_ContrType)	Manuscripts, LC-Created [Set 05_MS_LC]		Manuscripts, nonLC-Created [Set 05_MS_nonLC]	
	Number of Records	% of Total Records in Subset	Number of Records	% of Total Records in Subset
# (No specified type)	11,425	99.60%	4,341,564	98.87%
a (Archival)	46	0.40%	49,406	1.13%
TOTAL	11,471	100.00%	4,390,970	100.00%

**Table 2.5.9. Distribution of Records by Type of Control:
Music Subsets**

Type of Control (08_ContrType)	Music, LC-Created [Set 06_MU_LC]		Music, nonLC-Created [Set 06_MU_nonLC]	
	Number of Records	% of Total Records in Subset	Number of Records	% of Total Records in Subset
# (No specified type)	109,241	99.99%	1,165,357	99.80%
a (Archival)	8	0.01%	2,297	0.20%
TOTAL	109,249	100.00%	1,167,654	100.00%

**Table 2.5.10. Distribution of Records by Type of Control:
Sound Recordings Subsets**

Type of Control (08_ContrType)	Sound Recordings, LC-Created [Set 07_SR_LC]		Sound Recordings, nonLC-Created [Set 07_SR_nonLC]	
	Number of Records	% of Total Records in Subset	Number of Records	% of Total Records in Subset
# (No specified type)	241,901	99.98%	1,685,755	99.03%
a (Archival)	39	0.02%	16,587	0.97%
TOTAL	241,940	100.00%	1,702,342	100.00%

**Table 2.5.11. Distribution of Records by Type of Control:
Projected Media Subsets**

Type of Control (08_ContrType)	Projected Media, LC-Created [Set 08_PM_LC]		Projected Media, nonLC-Created [Set 08_PM_nonLC]	
	Number of Records	% of Total Records in Subset	Number of Records	% of Total Records in Subset
# (No specified type)	22,074	99.94%	1,410,673	99.65%
A (Archival)	14	0.06%	4,933	0.35%
TOTAL	22,088	100.00%	1,415,606	100.00%

**Table 2.5.12. Distribution of Records by Type of Control:
Graphic Materials Subsets**

Type of Control (08_ContrType)	Graphic Materials, LC-Created [Set 09_GM_LC]		Graphic Materials, nonLC-Created [Set 09_GM_nonLC]	
	Number of Records	% of Total Records in Subset	Number of Records	% of Total Records in Subset
# (No specified type)	62,031	99.05%	434,001	85.70%
a (Archival)	594	0.95%	72,400	14.30%
TOTAL	62,625	100.00%	506,401	100.00%

**Table 2.5.13. Distribution of Records by Type of Control:
Three Dimensional Objects and Realia Subsets**

Type of Control (08_ContrType)	Three Dimensional Objects and Realia, LC-Created [Set 10_3D_LC]		Three Dimensional Objects and Realia, nonLC-Created [Set 10_3D_nonLC]	
	Number of Records	% of Total Records in Subset	Number of Records	% of Total Records in Subset
# (No specified type)	62	100.00%	72,698	99.57%
a (Archival)	0	0%	315	0.43%
TOTAL	62	100.00%	73,013	100.00%

Q12. What is the distribution of records by Type of Control and Type of Record?

The following tables show the distribution of records by Type of Control and Type of Record in the MCDU dataset and each of the two sets of LC-created and nonLC-created records.

Table 2.5.14. Distribution of Records by Type of Record and Type of Control, As a Percentage of Each Type of Record: MCDU Project Dataset

[Set 56M]		
Type of Record (06_RecType)	Type of Control (08_ContrType)	
	# (No specified type)	a (Archival)
a (Language material)	99.95%	0.05%
c (Notated music)	99.97%	0.03%
D (Manuscript notated music)	96.93%	3.07%
E (Cartographic material)	99.86%	0.14%
F (Manuscript cartographic material)	96.46%	3.54%
G (Projected medium)	99.66%	0.34%
i (Nonmusical sound recording)	99.43%	0.57%
J (Musical sound recording)	99.03%	0.97%
K (Two-dimensional nonprojectable graphic)	92.43%	7.57%
M (Computer file)	99.98%	0.03%
O (Kit)	99.96%	0.04%
P (Mixed material)	80.97%	19.03%
R (Three-dimensional artifact or naturally occurring object)	99.29%	0.71%
T (Manuscript language material)	98.88%	1.12%
Percentage of all records in dataset	99.70%	0.30%

Table 2.5.15. Distribution of Records by Type of Record and Type of Control, As a Percentage of Each Type of Record: LC-Created Records Set

[Set 00_LC]		
Type of Record (06_RecType)	Type of Control (08_ContrType)	
	# (No specified type)	a (Archival)
a (Language material)	100.00%	< 0.01%
c (Notated music)	100.00%	< 0.01%
d (Manuscript notated music)	99.86%	0.15%
e (Cartographic material)	100.00%	< 0.01%
f (Manuscript cartographic material)	100.00%	0%
g (Projected medium)	99.94%	0.06%
i (Nonmusical sound recording)	99.94%	0.06%
j (Musical sound recording)	99.99%	0.01%
k (Two-dimensional nonprojectable graphic)	99.99%	0.01%
m (Computer file)	100.00%	0%
o (Kit)	100.00%	0%
p (Mixed material)	43.94%	56.07%
r (Three-dimensional artifact or naturally occurring object)	100.00%	0%
t (Manuscript language material)	99.60%	0.40%
Percentage of all records in set	99.99%	0.01%

Table 2.5.16. Distribution of Records by Type of Record and Type of Control, As a Percentage of Each Type of Record: nonLC-Created Records Set

[Set 00_nonLC]		
Type of Record (06_RecType)	Type of Control (08_ContrType)	
	# (No specified type)	a (Archival)
a (Language material)	99.94%	0.06%
c (Notated music)	99.97%	0.03%
D (Manuscript notated music)	96.79%	3.21%
E (Cartographic material)	99.80%	0.20%
F (Manuscript cartographic material)	95.85%	4.15%
G (Projected medium)	99.65%	0.35%
i (Nonmusical sound recording)	99.39%	0.61%
j (Musical sound recording)	98.88%	1.12%
k (Two-dimensional nonprojectable graphic)	90.76%	9.24%
m (Computer file)	99.97%	0.03%
o (Kit)	99.96%	0.04%
p (Mixed material)	81.13%	18.87%
r (Three-dimensional artifact or naturally occurring object)	99.29%	0.71%
t (Manuscript language material)	98.87%	1.13%
Percentage of all records in set	99.64%	0.36%

2.6. Encoding Level

Q13. What is the distribution of records by Encoding Level?

The following tables show the distribution of records in each set by Encoding Level. The *MARC 21 Format for Bibliographic Data* defines ten Encoding Level (Leader/17) codes, while *OCLC Bibliographic Formats and Standards* defines a total of fourteen. Two of the MARC 21 codes are not authorized for use by OCLC: **u** (Unknown) and **z** (Not applicable). In addition to the remaining valid codes, OCLC define six additional codes for their participants' use: **E** (System-identified MARC error in batchloaded record), **I** (full-level input by OCLC participants), **J** (Deleted record), **K** (Less-than-full input by OCLC participants), **L** (Full-level input added from a batch process), and **M** (Less-than-full added from a batch process).

**Table 2.6.1. Distribution of Records by Encoding Level:
MCDU Project Dataset**

[Set 56M]		
Encoding Level (17_EncodLevel)	Number of Records	% of Total Records in Dataset
# (Full level)	7,661,972	13.64%
1 (Full level, material not examined)	1,008,535	1.80%
2 (Less-than-full level, material not examined)	1,834	< 0.01%
3 (Abbreviated level)	523,121	0.93%
4 (Core-level)	683,540	1.22%
5 (Partial, or preliminary, level)	294,867	0.52%
7 (Minimal-level)	1,342,230	2.39%
8 (Prepublication level)	406,545	0.72%
E (System-identified MARC error in batchloaded record)	20	< 0.01%
I (Full-level input by OCLC participants)	24,796,637	44.14%
J (Deleted record)	62,375	0.11%
K (Less-than-full input by OCLC participants)	9,797,610	17.44%
L (Full-level input added from a batch process)	977,169	1.74%
M (Less-than-full added from a batch process)	8,620,928	15.35%
u (Unknown)	0	0%
z (Not applicable)	0	0%
TOTAL	56,177,383	100.00%

**Table 2.6.2. Distribution of Records by Encoding Level:
LC-Created Records Set**

[Set 00_LC]		
Encoding Level (17_EncodLevel)	Number of Records	% of Total Records in Set
# (Full level)	4,934,795	56.63%
1 (Full level, material not examined)	575,441	6.60%
2 (Less-than-full level, material not examined)	1,456	0.02%
3 (Abbreviated level)	13,622	0.16%
4 (Core-level)	479,602	5.50%
5 (Partial, or preliminary, level)	41,023	0.47%
7 (Minimal-level)	709,350	8.14%
8 (Prepublication level)	56,612	0.65%
E (System-identified MARC error in batchloaded record)	4	< 0.01%
I (Full-level input by OCLC participants)	1,638,019	18.80%
J (Deleted record)	52,271	0.60%
K (Less-than-full input by OCLC participants)	62,459	0.72%
L (Full-level input added from a batch process)	49,173	0.56%
M (Less-than-full added from a batch process)	99,838	1.15%
u (Unknown)	0	0%
z (Not applicable)	0	0%
TOTAL	8,713,665	100.00%

**Table 2.6.3. Distribution of Records by Encoding Level:
NonLC-Created Records Set**

[Set 00_nonLC]		
Encoding Level (17_EncodLevel)	Number of Records	% of Total Records in Set
# (Full level)	2,727,177	5.75%
1 (Full level, material not examined)	433,094	0.91%
2 (Less-than-full level, material not examined)	378	< 0.01%
3 (Abbreviated level)	509,499	1.07%
4 (Core-level)	203,938	0.43%
5 (Partial, or preliminary, level)	253,844	0.53%
7 (Minimal-level)	632,880	1.33%
8 (Prepublication level)	349,933	0.74%
E (System-identified MARC error in batchloaded record)	16	< 0.01%
I (Full-level input by OCLC participants)	23,158,618	48.79%
J (Deleted record)	10,104	0.02%
K (Less-than-full input by OCLC participants)	9,735,151	20.51%
L (Full-level input added from a batch process)	927,996	1.96%
M (Less-than-full added from a batch process)	8,521,090	17.95%
u (Unknown)	0	0%
z (Not applicable)	0	0%
TOTAL	47,463,718	100.00%

**Table 2.6.4. Distribution of Records by Encoding Level:
Books, Pamphlets, and Printed Sheets Subsets**

Encoding Level (17_EncodLevel)	Books, Pamphlets, and Printed Sheets, LC-Created [Set 01_B_LC]		Books, Pamphlets, and Printed Sheets, nonLC-Created [Set 01_B_nonLC]	
	Number of Records	% of Total Records in Subset	Number of Records	% of Total Records in Subset
# (Full level)	4,393,198	57.84%	2,081,125	6.02%
1 (Full level, material not examined)	543,060	7.15%	271,482	0.79%
2 (Less-than-full level, material not examined)	345	< 0.01%	26	< 0.01%
3 (Abbreviated level)	616	0.01%	224,751	0.65%
4 (Core-level)	428,921	5.65%	155,394	0.45%
5 (Partial, or preliminary, level)	36,366	0.48%	227,776	0.66%
7 (Minimal-level)	407,673	5.37%	465,109	1.35%
8 (Prepublication level)	47,925	0.63%	348,438	1.01%
E (System-identified MARC error in batchloaded record)	4	< 0.01%	11	< 0.01%
I (Full-level input by OCLC participants)	1,505,017	19.81%	16,126,882	46.68%
J (Deleted record)	50,866	0.67%	4,915	0.01%
K (Less-than-full input by OCLC participants)	41,768	0.55%	6,823,168	19.75%
L (Full-level input added from a batch process)	48,230	0.63%	821,451	2.38%
M (Less-than-full added from a batch process)	91,898	1.21%	6,995,672	20.25%
u (Unknown)	0	0%	0	0%
z (Not applicable)	0	0%	0	0%
TOTAL	7,595,887	100.00%	34,546,200	100.00%

**Table 2.6.5. Distribution of Records by Encoding Level:
Cartographic Materials Subsets**

Encoding Level (17_EncodLevel)	Cartographic Materials, LC-Created [Set 02_CM_LC]		Cartographic Materials, nonLC-Created [Set 02_CM_nonLC]	
	Number of Records	% of Total Records in Subset	Number of Records	% of Total Records in Subset
# (Full level)	210,182	86.80%	3,423	0.57%
1 (Full level, material not examined)	2,122	0.88%	39	0.01%
2 (Less-than-full level, material not examined)	0	0%	0	0%
3 (Abbreviated level)	260	0.11%	206	0.04%
4 (Core-level)	4,299	1.78%	516	0.09%
5 (Partial, or preliminary, level)	118	0.05%	6	< 0.01%
7 (Minimal-level)	18,798	7.76%	23	< 0.01%
8 (Prepublication level)	44	0.02%	33	0.01%
E (System-identified MARC error in batchloaded record)	0	0%	0	0%
I (Full-level input by OCLC participants)	4,781	1.97%	363,198	60.87%
J (Deleted record)	1,190	0.49%	3	< 0.01%
K (Less-than-full input by OCLC participants)	64	0.03%	71,272	11.95%
L (Full-level input added from a batch process)	40	0.02%	1,623	0.27%
M (Less-than-full added from a batch process)	234	0.10%	156,300	26.20%
u (Unknown)	0	0%	0	0%
Z (Not applicable)	0	0%	0	0%
TOTAL	242,132	100.00%	596,642	100.00%

**Table 2.6.6. Distribution of Records by Encoding Level:
Electronic Resources Subsets**

Encoding Level (17_EncodLevel)	Electronic Resources, LC-Created [Set 03_ER_LC]		Electronic Resources, nonLC-Created [Set 03_ER_nonLC]	
	Number of Records	% of Total Records in Subset	Number of Records	% of Total Records in Subset
# (Full level)	8,846	22.18%	33,070	3.79%
1 (Full level, material not examined)	4	0.01%	154	0.02%
2 (Less-than-full level, material not examined)	0	0%	192	0.02%
3 (Abbreviated level)	51	0.13%	254,420	29.18%
4 (Core-level)	2,639	6.62%	13,224	1.52%
5 (Partial, or preliminary, level)	212	0.53%	96	0.01%
7 (Minimal-level)	10,267	25.75%	7,323	0.84%
8 (Prepublication level)	2,012	5.05%	1,223	0.14%
E (System-identified MARC error in batchloaded record)	0	0%	3	< 0.01%
I (Full-level input by OCLC participants)	149	0.37%	335,624	38.49%
J (Deleted record)	37	0.09%	5,119	0.59%
K (Less-than-full input by OCLC participants)	0	0%	143,910	16.51%
L (Full-level input added from a batch process)	15,658	39.26%	47,853	5.49%
M (Less-than-full added from a batch process)	4	0.01%	29,670	3.40%
u (Unknown)	0	0%	0	0%
Z (Not applicable)	0	0%	0	0%
TOTAL	39,879	100.00%	871,881	100.00%

**Table 2.6.7. Distribution of Records by Encoding Level:
Continuing Resources Subsets**

Encoding Level (17_EncodLevel)	Continuing Resources, LC-Created [Set 04_CR_LC]		Continuing Resources, nonLC-Created [Set 04_CR_nonLC]	
	Number of Records	% of Total Records in Subset	Number of Records	% of Total Records in Subset
# (Full level)	237,299	61.11%	477,859	21.79%
1 (Full level, material not examined)	17,901	4.61%	38,909	1.77%
2 (Less-than-full level, material not examined)	1	< 0.01%	8	< 0.01%
3 (Abbreviated level)	2	< 0.01%	18,160	0.83%
4 (Core-level)	2,231	0.57%	9,332	0.43%
5 (Partial, or preliminary, level)	3,999	1.03%	25,813	1.18%
7 (Minimal-level)	89,638	23.08%	152,790	6.97%
8 (Prepublication level)	6,571	1.69%	73	< 0.01%
E (System-identified MARC error in batchloaded record)	0	0%	0	0%
I (Full-level input by OCLC participants)	28,141	7.25%	887,460	40.47%
J (Deleted record)	0	0%	0	0%
K (Less-than-full input by OCLC participants)	534	0.14%	410,123	18.70%
L (Full-level input added from a batch process)	158	0.04%	11,533	0.53%
M (Less-than-full added from a batch process)	1,857	0.48%	160,949	7.34%
u (Unknown)	0	0%	0	0%
Z (Not applicable)	0	0%	0	0%
TOTAL	388,332	100.00%	2,193,009	100.00%

**Table 2.6.8. Distribution of Records by Encoding Level:
Manuscripts Subsets**

Encoding Level (17_EncodLevel)	Manuscripts, LC-Created [Set 05_MS_LC]		Manuscripts, nonLC-Created [Set 05_MS_nonLC]	
	Number of Records	% of Total Records in Subset	Number of Records	% of Total Records in Subset
# (Full level)	1,847	16.10%	34,111	0.78%
1 (Full level, material not examined)	1,959	17.08%	2,157	0.05%
2 (Less-than-full level, material not examined)	1	0.01%	3	< 0.01%
3 (Abbreviated level)	1	0.01%	5,866	0.13%
4 (Core-level)	24	0.21%	7,030	0.16%
5 (Partial, or preliminary, level)	0	0%	55	< 0.01%
7 (Minimal-level)	5,486	47.83%	198	< 0.01%
8 (Prepublication level)	4	0.04%	1	< 0.01%
E (System-identified MARC error in batchloaded record)	0	0%	0	0%
I (Full-level input by OCLC participants)	2,030	17.70%	2,345,430	53.41%
J (Deleted record)	0	0%	0	0%
K (Less-than-full input by OCLC participants)	31	0.27%	1,461,778	33.29%
L (Full-level input added from a batch process)	12	0.11%	26,129	0.60%
M (Less-than-full added from a batch process)	76	0.66%	508,212	11.57%
u (Unknown)	0	0%	0	0%
z (Not applicable)	0	0%	0	0%
TOTAL	11,471	100.00%	4,390,970	100.00%

**Table 2.6.9. Distribution of Records by Encoding Level:
Music Subsets**

Encoding Level (17_EncodLevel)	Music, LC-Created [Set 06_MU_LC]		Music, nonLC-Created [Set 06_MU_nonLC]	
	Number of Records	% of Total Records in Subset	Number of Records	% of Total Records in Subset
# (Full level)	32,379	29.64%	21,828	1.87%
1 (Full level, material not examined)	3,532	3.23%	5,085	0.44%
2 (Less-than-full level, material not examined)	6	0.01%	1	< 0.01%
3 (Abbreviated level)	0	0%	2,416	0.21%
4 (Core-level)	8,056	7.37%	3,234	0.28%
5 (Partial, or preliminary, level)	7	0.01%	20	< 0.01%
7 (Minimal-level)	14,368	13.15%	485	0.04%
8 (Prepublication level)	55	0.05%	56	< 0.01%
E (System-identified MARC error in batchloaded record)	0	0%	0	0%
I (Full-level input by OCLC participants)	44,696	40.91%	660,612	56.58%
J (Deleted record)	57	0.05%	5	< 0.01%
K (Less-than-full input by OCLC participants)	867	0.79%	158,845	13.60%
L (Full-level input added from a batch process)	417	0.38%	11,455	0.98%
M (Less-than-full added from a batch process)	4,809	4.40%	303,612	26.00%
u (Unknown)	0	0%	0	0%
z (Not applicable)	0	0%	0	0%
TOTAL	109,249	100.00%	1,167,654	100.00%

**Table 2.6.10. Distribution of Records by Encoding Level:
Sound Recordings Subsets**

Encoding Level (17_EncodLevel)	Sound Recordings, LC-Created [Set 07_SR_LC]		Sound Recordings, nonLC-Created [Set 07_SR_nonLC]	
	Number of Records	% of Total Records in Subset	Number of Records	% of Total Records in Subset
# (Full level)	43,104	17.82%	48,851	2.87%
1 (Full level, material not examined)	5,967	2.47%	14,592	0.86%
2 (Less-than-full level, material not examined)	93	0.04%	148	0.01%
3 (Abbreviated level)	11,784	4.87%	3,487	0.20%
4 (Core-level)	33,424	13.81%	4,623	0.27%
5 (Partial, or preliminary, level)	234	0.10%	57	< 0.01%
7 (Minimal-level)	95,486	39.47%	4,620	0.27%
8 (Prepublication level)	0	0%	82	< 0.01%
E (System-identified MARC error in batchloaded record)	0	0%	1	< 0.01%
I (Full-level input by OCLC participants)	48,091	19.88%	1,110,288	65.22%
J (Deleted record)	116	0.05%	9	< 0.01%
K (Less-than-full input by OCLC participants)	2,471	1.02%	315,051	18.51%
L (Full-level input added from a batch process)	315	0.13%	6,024	0.35%
M (Less-than-full added from a batch process)	855	0.35%	194,509	11.43%
u (Unknown)	0	0%	0	0%
z (Not applicable)	0	0%	0	0%
TOTAL	241,940	100.00%	1,702,342	100.00%

**Table 2.6.11. Distribution of Records by Encoding Level:
Projected Media Subsets**

Encoding Level (17_EncodLevel)	Projected Media, LC-Created [Set 08_PM_LC]		Projected Media, nonLC-Created [Set 08_PM_nonLC]	
	Number of Records	% of Total Records in Subset	Number of Records	% of Total Records in Subset
# (Full level)	2,422	10.97%	26,639	1.88%
1 (Full level, material not examined)	662	3.00%	0	0%
2 (Less-than-full level, material not examined)	0	0%	84,406	5.96%
3 (Abbreviated level)	650	2.94%	43	< 0.01%
4 (Core-level)	8	0.04%	10,441	0.74%
5 (Partial, or preliminary, level)	87	0.39%	10	< 0.01%
7 (Minimal-level)	12,875	58.29%	2,324	0.16%
8 (Prepublication level)	1	0.01%	19	< 0.01%
E (System-identified MARC error in batchloaded record)	0	0%	1	< 0.01%
I (Full-level input by OCLC participants)	4,335	19.63%	925,256	65.36%
J (Deleted record)	3	0.01%	53	< 0.01%
K (Less-than-full input by OCLC participants)	939	4.25%	240,982	17.02%
L (Full-level input added from a batch process)	1	0.01%	787	0.06%
M (Less-than-full added from a batch process)	105	0.48%	124,645	8.81%
u (Unknown)	0	0%	0	0%
z (Not applicable)	0	0%	0	0%
TOTAL	22,088	100.00%	1,415,606	100.00%

**Table 2.6.12. Distribution of Records by Encoding Level:
Graphic Materials Subsets**

Encoding Level (17_EncodLevel)	Graphic Materials, LC-Created [Set 09_GM_LC]		Graphic Materials, nonLC-Created [Set 09_GM_nonLC]	
	Number of Records	% of Total Records in Subset	Number of Records	% of Total Records in Subset
# (Full level)	5,514	8.81%	109	0.02%
1 (Full level, material not examined)	234	0.37%	16,269	3.21%
2 (Less-than-full level, material not examined)	1,009	1.61%	0	0%
3 (Abbreviated level)	258	0.41%	150	0.03%
4 (Core-level)	0	0%	95	0.02%
5 (Partial, or preliminary, level)	0	0%	2	< 0.01%
7 (Minimal-level)	54,759	87.44%	2	< 0.01%
8 (Prepublication level)	0	0%	2	< 0.01%
E (System-identified MARC error in batchloaded record)	0	0%	0	0%
I (Full-level input by OCLC participants)	722	1.15%	348,189	68.76%
J (Deleted record)	2	< 0.01%	0	0%
K (Less-than-full input by OCLC participants)	127	0.20%	96,387	19.03%
L (Full-level input added from a batch process)	0	0%	1,035	0.20%
M (Less-than-full added from a batch process)	0	0%	44,161	8.72%
u (Unknown)	0	0%	0	0%
z (Not applicable)	0	0%	0	0%
TOTAL	62,625	100.00%	506,401	100.00%

**Table 2.6.13. Distribution of Records by Encoding Level:
Three-Dimensional Objects and Realia Subsets**

Encoding Level (17_EncodLevel)	Three-Dimensional Objects and Realia, LC-Created [Set 10_3D_LC]		Three-Dimensional Objects and Realia, nonLC-Created [Set 10_3D_nonLC]	
	Number of Records	% of Total Records in Subset	Number of Records	% of Total Records in Subset
# (Full level)	4	6.45%	162	0.22%
1 (Full level, material not examined)	0	0%	1	< 0.01%
2 (Less-than-full level, material not examined)	1	1.61%	0	0%
3 (Abbreviated level)	0	0%	0	0%
4 (Core-level)	0	0%	49	0.07%
5 (Partial, or preliminary, level)	0	0%	9	0.01%
7 (Minimal-level)	0	0%	6	0.01%
8 (Prepublication level)	0	0%	6	0.01%
E (System-identified MARC error in batchloaded record)	0	0%	0	0%
I (Full-level input by OCLC participants)	57	91.94%	55,679	76.26%
J (Deleted record)	0	0%	0	0%
K (Less-than-full input by OCLC participants)	0	0%	13,635	18.68%
L (Full-level input added from a batch process)	0	0%	106	0.15%
M (Less-than-full added from a batch process)	0	0%	3,360	4.60%
u (Unknown)	0	0%	0	0%
Z (Not applicable)	0	0%	0	0%
TOTAL	62	100.00%	73,013	100.00%

Q14. What is the distribution of records by Encoding Level and Type of Record?

Table 2.6.14a. Distribution of Records by Encoding Level (Numeric Codes) and Type of Record, As a Percentage of Each Type of Record: MCDU Project Dataset.

[Set 56M]								
Type of Record (06_RecType)	Encoding Level (17_EncodLevel)							
	Full-level	Full-level, material not examined	Less-than- full level, material not examined	Abbreviated level	Core-level	Partial (preliminary) level	Minimal- level	Prepublication level
	#	1	2	3	4	5	7	8
a (Language material)	15.92%	1.92%	< 0.01%	1.03%	1.34%	0.65%	2.49%	0.90%
c (Notated music)	4.34%	0.52%	< 0.01%	0.20%	0.92%	< 0.01%	1.22%	< 0.01%
d (Manuscript notated music)	2.37%	3.68%	0%	0.06%	0.10%	0%	0.03%	0%
e (Cartographic material)	25.39%	0.25%	0%	0.10%	0.62%	0.01%	2.24%	< 0.01%
f (Manuscript cartographic material)	14.17%	0.31%	0%	0.04%	0.05%	0%	0.11%	0%
g (Projected medium)	2.02%	5.91%	0%	0.05%	0.73%	< 0.01%	1.06%	< 0.01%
i (Nonmusical sound recording)	2.96%	0.13%	< 0.01%	0.05%	3.15%	0.01%	2.50%	0.01%
j (Musical sound recording)	5.42%	1.42%	0.01%	1.07%	1.49%	0.02%	6.18%	0%
k (Two-dimensional nonprojectable graphic)	1.66%	< 0.01%	0.30%	3.83%	0.02%	< 0.01%	16.11%	< 0.01%
m (Computer file)	2.96%	< 0.01%	< 0.01%	8.00%	1.13%	0.06%	1.66%	0.07%
o (Kit)	0.53%	< 0.01%	0%	0%	0.08%	0.03%	0.02%	0.02%
p (Mixed materials)	< 0.01%	6.64%	0%	0.06%	0.02%	< 0.01%	< 0.01%	0%
r (Three-dimensional artifact or naturally occurring object)	< 0.01%	0%	< 0.01%	0%	0.06%	0%	< 0.01%	0%

[Set 56M]								
Type of Record (06_RecType)	Encoding Level (17_EncodLevel)							
	Full-level	Full-level, material not examined	Less-than- full level, material not examined	Abbreviated level	Core-level	Partial (preliminary) level	Minimal- level	Prepublication level
	#	1	2	3	4	5	7	8
t (Manuscript language material)	0.82%	0.09%	< 0.01%	0.14%	0.16%	< 0.01%	0.13%	< 0.01%
Percentage of all records in dataset	13.64%	1.80%	< 0.01%	0.93%	1.22%	0.52%	2.39%	0.72%

Table 2.6.14b. Distribution of Records by Encoding Level (Alphabetic Codes) and Type of Record, As a Percentage of Each Type of Record: MCDU Project Dataset.

[Set 56M]								
Type of Record (06_RecType)	Encoding Level (17_EncodLevel)							
	System- identified MARC error in batchloaded record E	Full-level input by OCLC participants I	Deleted record J	Less-than- full input by OCLC participants K	Full-level input added from a batch process L	Less-than- full added from a batch process M	Unknown u	Not applicable z
a (Language material)	<0.01%	41.28%	0.13%	16.25%	2.04%	16.04%	0%	0%
c (Notated music)	0%	55.39%	0.01%	12.70%	0.88%	23.82%	0%	0%
d (Manuscript notated music)	0%	51.42%	0%	8.61%	1.88%	31.84%	0%	0%
e (Cartographic material)	0%	43.52%	0.14%	9.20%	0.19%	18.32%	0%	0%
f (Manuscript cartographic material)	0%	46.54%	0.01%	11.55%	0.40%	26.82%	0%	0%
g (Projected medium)	<0.01%	64.68%	<0.01%	16.81%	0.05%	8.68%	0%	0%
i (Nonmusical sound recording)	<0.01%	63.01%	<0.01%	20.43%	0.51%	7.22%	0%	0%
j (Musical sound recording)	0%	58.27%	0.01%	14.73%	0.25%	11.14%	0%	0%
k (Two-dimensional nonprojectable graphic)	0%	54.87%	<0.01%	16.57%	0.02%	6.62%	0%	0%

[Set 56M]								
Type of Record (06_RecType)	Encoding Level (17_EncodLevel)							
	System-identified MARC error in batchloaded record	Full-level input by OCLC participants	Deleted record	Less-than- full input by OCLC participants	Full-level input added from a batch process	Less-than- full added from a batch process	Unknown	Not applicable
	E	I	J	K	L	M	u	z
m (Computer file)	0%	63.07%	0.01%	22.15%	0.80%	0.09%	0%	0%
o (Kit)	0%	74.87%	0%	16.92%	0.19%	7.33%	0%	0%
p (Mixed materials)	0%	66.31%	0%	17.72%	0.39%	8.85%	0%	0%
r (Three- dimensional artifact or naturally occurring object)	0%	77.31%	0%	19.89%	0.11%	2.62%	0%	0%
t (Manuscript language material)	0%	53.31%	0%	33.22%	0.59%	11.54%	0%	0%
Percentage of all records in dataset	<0.01%	44.14%	0.11%	17.44%	1.74%	15.35%	0%	0%

Table 2.6.15a. Distribution of Records by Encoding Level (Numeric Codes) and Type of Record, As a Percentage of Each Type of Record: LC-Created Records Set.

[Set 00_LC]								
Type of Record (06_RecType)	Encoding Level (17_EncodLevel)							
	Full-level	Full-level, material not examined	Less-than- full level, material not examined	Abbreviated level	Core-level	Partial (preliminary) level	Minimal- level	Prepublication level
	#	1	2	3	4	5	7	8
a (Language material)	57.85%	7.00%	<0.01%	0.01%	5.40%	0.51%	6.30%	0.70%
c (Notated music)	29.15%	2.06%	0.01%	0%	7.52%	0.01%	13.48%	0.05%
d (Manuscript notated music)	48.55%	48.37%	0%	0%	1.88%	0%	0.69%	0%
e (Cartographic material)	86.64%	0.86%	0%	0.11%	1.91%	0.05%	7.79%	0.02%
f (Manuscript cartographic material)	96.69%	2.04%	0%	0.24%	0.24%	0%	0.73%	0%

[Set 00_LC]								
Type of Record (06_RecType)	Encoding Level (17_EncodLevel)							
	Full-level	Full-level, material not examined	Less-than- full level, material not examined	Abbreviated level	Core-level	Partial (preliminary) level	Minimal- level	Prepublication level
	#	1	2	3	4	5	7	8
g (Projected medium)	10.96%	2.99%	0%	2.94%	0.09%	0.39%	58.26%	<0.01%
i (Nonmusical sound recording)	27.78%	1.23%	0.09%	0.34%	35.27%	0.15%	26.80%	0%
j (Musical sound recording)	15.53%	2.75%	0.03%	5.91%	8.90%	0.09%	42.37%	0%
k (Two-dimensional nonprojectable graphic)	8.96%	0.01%	1.63%	0.42%	0.06%	0%	88.86%	0%
m (Computer file)	37.13%	0%	0%	0.09%	6.77%	0.68%	20.62%	1.34%
o (Kit)	3.45%	0%	0%	0%	0%	0%	0%	0%
p (Mixed materials)	0.10%	21.97%	0%	0%	0%	0%	0%	0%
r (Three- dimensional artifact or naturally occurring object)	50%	0%	25.00%	0%	0%	0%	0%	0%
t (Manuscript language material)	16.09%	17.07%	0.01%	0.01%	0.21%	0%	47.79%	0.03%
Percentage of all records in set	56.63%	6.60%	0.02%	0.16%	5.50%	0.47%	8.14%	0.65%

Table 2.6.15b. Distribution of Records by Encoding Level (Alphabetic Codes) and Type of Record, As a Percentage of Each Type of Record: LC-Created Records Set.

[Set 00_LC]								
Type of Record (06_RecType)	Encoding Level (17_EncodLevel)							
	System-identified MARC error in batchloaded record E	Full-level input by OCLC participants I	Deleted record J	Less-than-full input by OCLC participants K	Full-level input added from a batch process L	Less-than-full added from a batch process M	Unknown u	Not applicable z
a (Language material)	< 0.01%	19.14%	0.64%	0.67%	0.60%	1.17%	0%	0%
c (Notated music)	0%	41.97%	0.05%	0.81%	0.39%	4.51%	0%	0%
d (Manuscript notated music)	0%	0.33%	0%	0.07%	0.04%	0.07%	0%	0%
e (Cartographic material)	0%	1.98%	0.49%	0.03%	0.02%	0.10%	0%	0%
f (Manuscript cartographic material)	0%	0%	0.05%	0%	0%	0%	0%	0%
g (Projected medium)	0%	19.61%	0.01%	4.25%	< 0.01%	0.47%	0%	0%
i (Nonmusical sound recording)	0%	7.61%	0.01%	0.59%	0.07%	0.07%	0%	0%
j (Musical sound recording)	0%	22.69%	0.06%	1.12%	0.14%	0.42%	0%	0%
k (Two-dimensional nonprojectable graphic)	0%	0.05%	< 0.01%	< 0.01%	0%	0%	0%	0%
m (Computer file)	0%	0.95%	0.22%	32.20%	0%	0%	0%	0%
o (Kit)	0%	96.55%	0%	0%	0%	0%	0%	0%
p (Mixed materials)	0%	65.90%	0%	12.03%	0%	0%	0%	0%
r (Three-dimensional artifact or naturally occurring object)	0%	25.00%	0%	0%	0%	0%	0%	0%
t (Manuscript language material)	0%	17.68%	0%	0.34%	0.10%	0.66%	0%	0%
Percentage of all records in set	< 0.01%	18.80%	0.60%	0.72%	0.56%	1.15%	0%	0%

Table 2.6.16a. Distribution of Records by Encoding Level (Numeric Codes) and Type of Record, As a Percentage of Each Type of Record: nonLC-Created Records Set

[Set 00_nonLC]								
Type of Record (06_RecType)	Encoding Level (17_EncodLevel)							
	Full-level	Full-level, material not examined	Less-than- full level, material not examined	Abbreviated level	Core-level	Partial (preliminary) level	Minimal- level	Prepublication level
	#	1	2	3	4	5	7	8
a (Language material)	6.93%	0.83%	< 0.01%	1.25%	0.47%	0.68%	1.67%	0.94%
c (Notated music)	1.95%	0.37%	< 0.01%	0.21%	0.29%	< 0.01%	0.04%	0.01%
d (Manuscript notated music)	0.26%	1.64%	0%	0.07%	0.02%	0%	< 0.01%	0%
e (Cartographic material)	0.66%	0.01%	0%	0.09%	0.09%	< 0.01%	< 0.01%	0.01%
f (Manuscript cartographic material)	0%	0.01%	0%	0.01%	0.02%	0%	0%	0%
g (Projected medium)	1.88%	5.96%	0%	< 0.01%	0.74%	< 0.01%	0.16%	< 0.01%
i (Nonmusical sound recording)	0.73%	0.03%	< 0.01%	0.02%	0.27%	< 0.01%	0.32%	0.02%
j (Musical sound recording)	3.76%	1.20%	0.01%	0.28%	0.27%	< 0.01%	0.25%	0%
k (Two-dimensional nonprojectable graphic)	0.04%	0%	0%	4.59%	0.02%	< 0.01%	< 0.01%	< 0.01%
m (Computer file)	1.03%	< 0.01%	< 0.01%	8.44%	0.81%	0.02%	0.58%	< 0.01%
o (Kit)	0.53%	< 0.01%	0%	0%	0.08%	0.03%	0.02%	0.02%
p (Mixed materials)	0.01%	6.58%	0%	0.06%	0.02%	< 0.01%	< 0.01%	0%
r (Three-dimensional artifact or naturally occurring object)	< 0.01%	0%	0%	0%	0.06%	0%	< 0.01%	0%

[Set 00_nonLC]								
Type of Record (06_RecType)	Encoding Level (17_EncodLevel)							
	Full-level	Full-level, material not examined	Less-than- full level, material not examined	Abbreviated level	Core-level	Partial (preliminary) level	Minimal- level	Prepublication level
	#	1	2	3	4	5	7	8
t (Manuscript language material)	0.78%	0.05%	< 0.01%	0.14%	0.16%	< 0.01%	< 0.01%	< 0.01%
Percentage of all records in set	5.75%	0.91%	< 0.01%	1.07%	0.43%	0.53%	1.33%	0.74%

Table 2.6.16b. Distribution of Records by Encoding Level (Alphabetic Codes) and Type of Record, As a Percentage of Each Type of Record: nonLC-Created Records Set.

[Set 00_nonLC]								
Type of Record (06_RecType)	Encoding Level (17_EncodLevel)							
	System- identified MARC error in batchloaded record E	Full-level input by OCLC participants I	Deleted record J	Less-than- full input by OCLC participants K	Full-level input added from a batch process L	Less-than- full added from a batch process M	Unknown u	Not applicable z
a (Language material)	0%	46.03%	0.03%	19.59%	2.35%	19.23%	0%	0%
c (Notated music)	0%	56.68%	< 0.01%	13.84%	0.93%	25.67%	0%	0%
d (Manuscript notated music)	0%	53.76%	0%	9.00%	1.96%	33.29%	0%	0%
e (Cartographic material)	0%	60.29%	< 0.01%	12.91%	0.26%	25.68%	0%	0%
f (Manuscript cartographic material)	0%	54.54%	0%	13.54%	0.47%	31.43%	0%	0%
g (Projected medium)	< 0.01%	65.39%	< 0.01%	17.01%	0.06%	8.80%	0%	0%
i (Nonmusical sound recording)	< 0.01%	67.98%	0%	22.21%	0.55%	7.87%	0%	0%
j (Musical sound recording)	0%	64.10%	< 0.01%	16.95%	0.27%	12.90%	0%	0%

[Set 00_nonLC]								
Type of Record (06_RecType)	Encoding Level (17_EncodLevel)							
	System-identified MARC error in batchloaded record E	Full-level input by OCLC participants I	Deleted record J	Less-than-full input by OCLC participants K	Full-level input added from a batch process L	Less-than-full added from a batch process M	Unknown u	Not applicable z
k (Two-dimensional nonprojectable graphic)	0%	67.00%	0%	20.24%	0.03%	8.08%	0%	0%
m (Computer file)	0%	66.59%	< 0.01%	21.58%	0.85%	0.10%	0%	0%
o (Kit)	0%	74.83%	0%	16.95%	0.19%	7.35%	0%	0%
p (Mixed materials)	0%	66.31%	0%	17.74%	0.39%	8.89%	0%	0%
r (Three-dimensional artifact or naturally occurring object)	0%	77.32%	0%	19.89%	0.11%	2.62%	0%	0%
t (Manuscript language material)	0%	53.41%	0%	33.30%	0.59%	11.57%	0%	0%
Percentage of all records in set	< 0.01%	48.79%	0.02%	20.51%	1.96%	17.95%	0%	0%

2.7. Descriptive Cataloging Form

Q15. What is the distribution of records by Descriptive cataloging form?

The following tables show the distribution of records for each set by Descriptive Cataloging Form. While the code ? is not a valid code in either *MARC 21 Format for Bibliographic Data* or *OCLC Bibliographic Formats and Standards*, this value does occur in one of the records in the dataset (ocm28511427), therefore it is included in these results.

**Table 2.7.1. Distribution of Records by Descriptive Cataloging Form:
MCDU Project Dataset**

[Set 56M]		
Descriptive Cataloging Form (18_DescrCatForm)	Number of Records	% of Total Records in Dataset
# (Non-ISBD)	11,488,171	20.45%
a (AACR2)	35,932,969	63.96%
i (ISBD)	8,685,212	15.46%
u (Unknown)	71,030	0.13%
? (Not a valid code)	1	< 0.01%
TOTAL	56,177,383	100.00%

**Table 2.7.2. Distribution of Records by Descriptive Cataloging Form:
LC-Created Records Set**

[Set 00_LC]		
Descriptive Cataloging Form (18_DescrCatForm)	Number of Records	% of Total Records in Subset
# (Non-ISBD)	2,360,067	27.08%
a (AACR2)	5,304,099	60.87%
i (ISBD)	1,049,473	12.04%
u (Unknown)	26	< 0.01%
TOTAL	8,713,665	100.00%

**Table 2.7.3. Distribution of Records by Descriptive Cataloging Form:
nonLC-Created Records Set**

[Set 00_nonLC]		
Descriptive Cataloging Form (18_DescrCatForm)	Number of Records	% of Total Records in Subset
# (Non-ISBD)	9,128,104	19.23%
a (AACR2)	30,628,870	64.53%
i (ISBD)	7,635,739	16.09%
u (Unknown)	71,004	0.15%
? (Not a valid code)	1	< 0.01%
TOTAL	47,463,718	100.00%

**Table 2.7.4. Distribution of Records by Descriptive Cataloging Form:
Books, Pamphlets, and Printed Sheets Subsets**

Descriptive Cataloging Form (18_DescrCatForm)	Books, Pamphlets, and Printed Sheets, LC-Created [Set 01_B_LC]		Books, Pamphlets, and Printed Sheets, nonLC-Created [Set 01_B_nonLC]	
	Number of Records	% of Total Records in Subset	Number of Records	% of Total Records in Subset
# (Non-ISBD)	2,096,144	27.60%	7,330,048	21.22%
a (AACR2)	4,482,697	59.01%	20,565,933	59.53%
i (ISBD)	1,017,020	13.39%	6,634,792	19.21%
u (Unknown)	26	< 0.01%	15,427	0.04%
TOTAL	7,595,887	100.00%	34,546,200	100.00%

**Table 2.7.5. Distribution of Records by Descriptive Cataloging Form:
Cartographic Materials Subsets**

Descriptive Cataloging Form (18_DescrCatForm)	Cartographic Materials, LC-Created [Set 02_CM_LC]		Cartographic Materials, nonLC-Created [Set 02_CM_nonLC]	
	Number of Records	% of Total Records in Subset	Number of Records	% of Total Records in Subset
# (Non-ISBD)	70,575	29.15%	26,097	4.37%
A (AACR2)	154,152	63.66%	493,658	82.74%
I (ISBD)	17,405	7.19%	76,887	12.89%
U (Unknown)	0	0%	0	0%
TOTAL	242,132	100%	596,642	100%

**Table 2.7.6. Distribution of Records by Descriptive Cataloging Form:
Electronic Resources Subsets**

Descriptive Cataloging Form (18_DescrCatForm)	Electronic Resources, LC-Created [Set 03_ER_LC]		Electronic Resources, nonLC-Created [Set 03_ER_nonLC]	
	Number of Records	% of Total Records in Subset	Number of Records	% of Total Records in Subset
# (Non-ISBD)	15,772	39.55%	199,040	22.83%
a (AACR2)	24,003	60.19%	592,274	67.93%
i (ISBD)	104	0.26%	25,961	2.98%
u (Unknown)	0	0%	54,606	6.26%
TOTAL	39,879	100%	871,881	100%

**Table 2.7.7. Distribution of Records by Descriptive Cataloging Form:
Continuing Resources Subsets**

Descriptive Cataloging Form (18_DescrCatForm)	Continuing Resources, LC-Created [Set 04_CR_LC]		Continuing Resources, nonLC-Created [Set 04_CR_nonLC]	
	Number of Records	% of Total Records in Subset	Number of Records	% of Total Records in Subset
# (Non-ISBD)	111,200	28.64%	559,465	25.51%
a (AACR2)	276,459	71.19%	1,599,360	72.93%
i (ISBD)	673	0.17%	34,174	1.56%
u (Unknown)	0	0%	9	< 0.01%
? (Not a valid code)	0	0%	1	< 0.01%
TOTAL	388,332	100%	2,193,009	100.00%

**Table 2.7.8. Distribution of Records by Descriptive Cataloging Form:
Manuscripts Subsets**

Descriptive Cataloging Form (18_DescrCatForm)	Manuscripts, LC-Created [Set 05_MS_LC]		Manuscripts, nonLC-Created [Set 05_MS_nonLC]	
	Number of Records	% of Total Records in Subset	Number of Records	% of Total Records in Subset
# (Non-ISBD)	2,384	20.78%	552,139	12.57%
a (AACR2)	7,038	61.35%	3,315,191	75.50%
i (ISBD)	2,049	17.86%	523,540	11.92%
u (Unknown)	0	0%	100	< 0.01%
TOTAL	11,471	100%	4,390,970	100.00%

**Table 2.7.9. Distribution of Records by Descriptive Cataloging Form:
Music Subsets**

Descriptive Cataloging Form (18_DescrCatForm)	Music, LC-Created [Set 06_MU_LC]		Music, nonLC-Created [Set 06_MU_nonLC]	
	Number of Records	% of Total Records in Subset	Number of Records	% of Total Records in Subset
# (Non-ISBD)	29,113	26.65%	210,104	17.99%
A (AACR2)	70,342	64.39%	809,517	69.33%
I (ISBD)	9,794	8.96%	147,546	12.64%
U (Unknown)	0	0%	487	0.04%
TOTAL	109,249	100%	1,167,654	100%

**Table 2.7.10. Distribution of Records by Descriptive Cataloging Form:
Sound Recordings Subsets**

Descriptive Cataloging Form (18_DescrCatForm)	Sound Recordings, LC-Created [Set 07_SR_LC]		Sound Recordings, nonLC-Created [Set 07_SR_nonLC]	
	Number of Records	% of Total Records in Subset	Number of Records	% of Total Records in Subset
# (Non-ISBD)	30,348	12.54%	127,727	7.50%
a (AACR2)	210,501	87.01%	1,517,249	89.13%
i (ISBD)	1,091	0.45%	57,018	3.35%
u (Unknown)	0	0%	348	0.02%
TOTAL	241,940	100%	1,702,342	100%

Table 2.7.11. Distribution of Records by Descriptive Cataloging Form: Projected Media Subsets

Descriptive Cataloging Form (18_DescrCatForm)	Projected Media, LC-Created [Set 08_PM_LC]		Projected Media, nonLC-Created [Set 08_PM_nonLC]	
	Number of Records	% of Total Records in Subset	Number of Records	% of Total Records in Subset
# (Non-ISBD)	4,475	20.26%	91,167	6.44%
A (AACR2)	16,336	73.96%	1,207,290	85.28%
i (ISBD)	1,277	5.78%	117,123	8.27%
u (Unknown)	0	0%	26	< 0.01%
TOTAL	22,088	100%	1,415,606	100.00%

Table 2.7.12. Distribution of Records by Descriptive Cataloging Form: Graphic Materials Subsets

Descriptive Cataloging Form (18_DescrCatForm)	Graphic Materials, LC-Created [Set 09_GM_LC]		Graphic Materials, nonLC-Created [Set 09_GM_nonLC]	
	Number of Records	% of Total Records in Subset	Number of Records	% of Total Records in Subset
# (Non-ISBD)	54	0.09%	28,527	5.63%
a (AACR2)	62,566	99.91%	466,433	92.11%
i (ISBD)	5	0.01%	11,440	2.26%
u (Unknown)	0	0%	1	< 0.01%
TOTAL	62,625	100.00%	506,401	100.00%

Table 2.7.13. Distribution of Records by Descriptive Cataloging Form: Three-Dimensional Objects and Realia Subsets

Descriptive Cataloging Form (18_DescrCatForm)	Three-Dimensional Objects and Realia, LC-Created [Set 10_3D_LC]		Three-Dimensional Objects and Realia, nonLC-Created [Set 10_3D_nonLC]	
	Number of Records	% of Total Records in Subset	Number of Records	% of Total Records in Subset
# (Non-ISBD)	2	3.23%	3,790	5.19%
a (AACR2)	5	8.06%	61,965	84.87%
i (ISBD)	55	88.71%	7,258	9.94%
u (Unknown)	0	0%	0	0%
TOTAL	62	100%	73,013	100%

Q16: What is the distribution of records by Descriptive Cataloging Form and Type of Record?

The following tables show the distribution of records by Descriptive Cataloging Form and Type of Record for the MCDU dataset, and each of the two sets of LC-created and nonLC-created records. While the code ? is not a valid code in either *MARC 21 Format for Bibliographic Data* or *OCLC Bibliographic Formats and Standards*, this value does occur in one of the records in the dataset (ocm28511427); therefore, it is included in these results.

Table 2.7.14. Distribution of Records by Descriptive Cataloging Form and Type of Record, As a Percentage of Each Type of Record: MCDU Project Dataset

[Set56M]					
Type of Record (06_RecType)	Descriptive Cataloging Form (DescrCatForm)				
	# (Non-ISBD)	a (AACR2)	i (ISBD)	u (Unknown)	? (Not a valid code)
A (Language material)	22.68%	60.20%	17.00%	0.13%	< 0.01%
C (Notated music)	18.77%	68.48%	12.71%	0.04%	0%
D (Manuscript notated music)	17.60%	77.83%	4.54%	0.02%	0%
E (Cartographic material)	11.47%	77.37%	11.16%	0%	0%
F (Manuscript cartographic material)	5.27%	88.70%	6.03%	0%	0%
G (Projected medium)	6.65%	85.12%	8.23%	< 0.01%	0%
I (Nonmusical sound recording)	10.09%	86.83%	3.08%	< 0.01%	0%
J (Musical sound recording)	7.35%	89.67%	2.95%	0.02%	0%

[Set56M]					
Type of Record (06_RecType)	Descriptive Cataloging Form (DescrCatForm)				
	# (Non-ISBD)	a (AACR2)	i (ISBD)	u (Unknown)	? (Not a valid code)
k (Two-dimensional nonprojectable graphic)	4.08%	89.96%	2.63%	3.34%	0%
m (Computer file)	8.84%	90.24%	0.92%	< 0.01%	0%
o (Kit)	5.54%	80.23%	14.23%	0%	0%
p (Mixed material)	7.20%	91.78%	1.02%	0%	0%
r (Three-dimensional artifact or naturally occurring object)	4.92%	88.17%	6.90%	0%	0%
t (Manuscript language material)	12.59%	75.48%	11.93%	< 0.01%	0%
Percentage of all records in dataset	20.45%	63.96%	15.46%	0.13%	< 0.01%

Table 2.7.15. Distribution of Records by Descriptive Cataloging Form and Type of Record, As a Percentage of Each Type of Record: LC-Created Records Set

[Set 00_LC]					
Type of Record (06_RecType)	Descriptive Cataloging Form (DescrCatForm)				
	# (Non-ISBD)	a (AACR2)	i (ISBD)	u (Unknown)	? (Not a valid code)
a (Language material)	27.70%	59.59%	12.70%	0%	0%
c (Notated music)	26.26%	64.56%	9.18%	0%	0%
d (Manuscript notated music)	41.73%	57.70%	0.58%	0%	0%
e (Cartographic material)	29.03%	63.78%	7.19%	0%	0%
f (Manuscript cartographic material)	29.20%	67.35%	3.46%	0%	0%
g (Projected medium)	20.24%	73.98%	5.78%	0%	0%
i (Nonmusical sound recording)	5.34%	94.45%	0.21%	0%	0%
j (Musical sound recording)	14.19%	85.30%	0.51%	0%	0%
k (Two-dimensional nonprojectable graphic)	0.05%	99.94%	0.01%	0%	0%
m (Computer file)	33.13%	66.25%	0.62%	0%	0%
o (Kit)	1.72%	3.45%	94.83%	0%	0%
p (Mixed material)	2.01%	97.80%	0.19%	0%	0%

[Set 00 LC]					
Type of Record (06_RecType)	Descriptive Cataloging Form (DescrCatForm)				
	# (Non-ISBD)	a (AACR2)	i (ISBD)	u (Unknown)	? (Not a valid code)
r (Three-dimensional artifact or naturally occurring object)	25.00%	75.00%	0%	0%	0%
t (Manuscript language material)	20.84%	61.31%	17.85%	0%	0%
Percentage of all records in set	27.09%	60.87%	12.04%	0%	0%

Table 2.7.16. Distribution of Records by Descriptive Cataloging Form and Type of Record, As a Percentage of Each Type of Record: nonLC-Created Records Set

[Set 00_nonLC]					
Type of Record (06_RecType)	Descriptive Cataloging Form (DescrCatForm)				
	# (Non-ISBD)	a (AACR2)	i (ISBD)	u (Unknown)	? (Not a valid code)
A (Language material)	21.60%	60.33%	17.92%	0.16%	< 0.01%
c (Notated music)	18.05%	68.85%	13.05%	0.04%	0%
d (Manuscript notated music)	16.50%	78.75%	4.73%	0.02%	0%
e (Cartographic material)	4.37%	82.86%	12.77%	0%	0%
f (Manuscript cartographic material)	1.16%	92.37%	6.47%	0%	0%
g (Projected medium)	6.43%	85.30%	8.27%	< 0.01%	0%
i (Nonmusical sound recording)	10.52%	86.15%	3.34%	< 0.01%	0%
j (Musical sound recording)	6.23%	90.39%	3.35%	0.03%	0%
k (Two-dimensional nonprojectable graphic)	4.97%	87.75%	3.21%	4.08%	0%
m (Computer file)	7.47%	91.59%	0.94%	< 0.01%	0%
o (Kit)	5.55%	80.37%	14.08%	0%	0%
p (Mixed material)	7.22%	91.76%	1.02%	0%	0%
r (Three-dimensional artifact or naturally occurring object)	4.92%	88.18%	6.91%	0%	0%
t (Manuscript language material)	12.57%	75.51%	11.92%	< 0.01%	0%
Percentage of all records in set	19.23%	64.53%	16.09%	0.15%	< 0.01%

2.8. Cataloging Source

Q17: How many agencies created the records, and which institutions created the records?

We can identify through interrogation of the 040\$a the organizations that were the source of the cataloging for the records. In the tables that follow, we present only the top 20 organizations ordered by number of records created.

**Table 2.8.1. Top 20 Original Cataloging Agency Codes:
MCDU Project Dataset
Total Agencies Creating Records: 30,679**

[Set 56M]		
	Original Cataloging Agency	Number of Records
1	DLC	8,381,124
2	UKM	1,335,223
3	NYP	1,082,031
4	NLC	792,650
5	LWU	733,650
6	CUY	706,189
7	FILIN	655,158
8	NLM	644,300
9	ZXW	594,121
10	YUS	581,330
11	HLS	540,809
12	IXA	435,161
13	CLU	419,790
14	CGU	417,266
15	GZM	370,870
16	COO	365,874
17	EQO	365,157
18	CLE	352,844
19	GPO	341,180
20	PUL	326,093

**Table 2.8.2. Top 20 Original Cataloging Agency Codes:
LC-Created Records Set
Total Agencies Creating Records: 487**

[Set 00 LC]		
	Original Cataloging Agency	Number of Records
1	DLC	8,381,124
2	UKM	1,335,223
3	NYP	1,082,031
4	NLC	792,650
5	LWU	733,650
6	CUY	706,189
7	FILIN	655,158
8	NLM	644,300
9	ZXW	594,121
10	YUS	581,330
11	HLS	540,809
12	IXA	435,161
13	CLU	419,790
14	CGU	417,266
15	GZM	370,870
16	COO	365,874
17	EQO	365,157
18	CLE	352,844
19	GPO	341,180
20	PUL	326,093

**Table 2.8.3. Top 20 Original Cataloging Agency Codes:
non LC-Created Records Set
Total Agencies Creating Records: 30,194**

[Set 00_nonLC]		
	Original Cataloging Agency	Number of Records
1	UKM	1,335,223
2	NYP	1,082,031
3	NLC	792,650
4	LWU	733,650
5	CUY	706,189
6	FILIN	655,158
7	NLM	644,300
8	ZXW	594,121
9	YUS	581,330
10	HLS	540,809
11	IXA	435,161
12	CLU	419,790
13	CGU	417,266
14	GZM	370,870
15	COO	365,874
16	EQO	365,157
17	CLE	352,844

[Set 00_nonLC]		
	Original Cataloging Agency	Number of Records
18	GPO	341,180
19	PUL	326,093
20	OSU	325,854

**Table 2.8.4. Top 20 Original Cataloging Agency Codes:
Books, Pamphlets, and Printed Sheets, LC-Created Records
Total Agencies Creating Records: 457**

Books, Pamphlets, and Printed Sheets, LC-Created [Set 01_B_LC]		
	Original Cataloging Agency	Number of Records
1	DLC	7,386,610
2	DLC-R	78,317
3	DNLM/DLC	57,246
4	DGPO/DLC	38,812
5	DLC/ICU	25,243
6	DLC/CU	3,714
7	LNN	802
8	DLC/MoSU-L	729
9	DLC/TxU	715
10	DLC/IU	578
11	DLC/CtY	565
12	DLC/MH	414
13	DLC/InU	409
14	DLC/MiU	337
15	IU/DLC	281
16	RETROCON/NYGG (DLC)	162
17	Princeton Univ. Libr. for DLC	73
18	DLC-P4	42
19	DGPO/DLC	25
20	Harvard univ. Library for DLC	21

**Table 2.8.5. Top 20 Original Cataloging Agency Codes:
Books, Pamphlets, and Printed Sheets,
nonLC-Created Records
Total Agencies Creating Records: 21,440**

Books, Pamphlets, and Printed Sheets, nonLC-Created [Set 01_B_nonLC]		
	Original Cataloging Agency	Number of Records
1	UKM	1,333,748
2	NYP	867,245
3	LWU	728,314
4	NLC	645,989
5	FILIN	613,391
6	ZXW	589,554

Books, Pamphlets, and Printed Sheets, nonLC-Created [Set 01_B_nonLC]		
	Original Cataloging Agency	Number of Records
7	NLM	546,572
8	YUS	526,737
9	CUY	502,944
10	HLS	444,819
11	CLU	337,415
12	CGU	327,026
13	CLE	290,411
14	PUL	287,222
15	COO	280,526
16	IXA	279,123
17	GPO	272,809
18	LGP	268,570
19	EQO	267,814
20	GZM	256,237

**Table 2.8.6. All Original Cataloging Agency Codes:
Cartographic Materials,
LC-Created Records**

Cartographic Materials, LC-Created [Set 02_CM_LC]		
	Original Cataloging Agency	Number of Records
1	DLC	241,911
2	DLC-R	164
3	NSD	20
4	DGPO/DLC	17
5	DLC/ICU	13
6	DNLM/DLC	2
7	DLC Div. of maps	1
8	Library, U.S.Geological Survey, copy 2. DLC	1
9	U.S. Geol. survey Libr. for DLC	1
10	Princeton Univ. Libr. for DLC	1

**Table 2.8.7. Top 20 Original Cataloging Agency Codes:
Cartographic Materials,
nonLC-Created Records
Total Agencies Creating Records: 3,199**

Cartographic Materials, nonLC-Created [Set 02_CM_nonLC]		
	Original Cataloging Agency	Number of Records
1	FILIN	39,829
2	CUY	37,725
3	GPO	33,050
4	UIU	15,747
5	EQO	15,682
6	GIS	15,256
7	COP	13,622
8	SPI	13,465
9	OKX	13,227
10	UPM	10,923
11	CUD	10,511
12	UUM	9,709
13	CGU	9,325
14	WAU	9,222
15	GZN	8,686
16	COO	8,312
17	JNA	8,076
18	FIJ	7,652
19	ESR	7,429
20	NYP	7,119

**Table 2.8.8. All Original Cataloging Agency Codes:
Electronic Resources,
LC-Created Records**

Electronic Resources, LC-Created [Set 03_ER_LC]		
	Original Cataloging Agency	Number of Records
1	DLC	15,869
2	LCP	15,695
3	NSD	8,301
4	LNN	7
5	DLC-R	3
6	DNLM/DLC	2
7	DGPO/DLC	2

**Table 2.8.9. Top 20 Original Cataloging Agency Codes:
Electronic Resources,
nonLC-Created Records
Total Agencies Creating Records: 3,835**

Electronic Resources, nonLC-Created [Set 03_ER_nonLC]		
	Original Cataloging Agency	Number of Records
1	N@F	167,060
2	N\$T	88,130
3	SCELO	40,981
4	GPO	19,774
5	BUF	18,896
6	NLC	18,637
7	HUA	15,699
8	TEFOD	12,318
9	UK-CbPIL	10,237
10	FUG	8,481
11	CUY	8,241
12	UUA	7,854
13	TNT	7,617
14	AGL	6,860
15	OCL	6,770
16	WAU	6,752
17	VPI	6,520
18	EYM	5,714
19	UWG	5,332
20	GUA	5,075

**Table 2.8.10. All Original Cataloging Agency Codes:
Continuing Resources,
LC-Created Records**

Continuing Resources, LC-Created [Set 04_CR_LC]		
	Original Cataloging Agency	Number of Records
1	DLC	290,439
2	NSD	95,079
3	NST	2,800
4	DLC DCL	1
5	U. S. Office of Education Library for DLC	1
6	ECO Okla. Univ. Lib. for DLC	1
7	ECO U.S.Q.B.R. for DLC	1
8	Oklahoma. State Libr. for DLC	1
9	DLC Virginia. State Library	1
10	GIS/DLC	1
11	DLC-N	1

**Table 2.8.11. Top 20 Original Cataloging Agency Codes:
Continuing Resources,
nonLC-Created Records
Total Agencies Creating Records: 5,850**

Continuing Resources, nonLC-Created [Set 04_CR_nonLC]		
	Original Cataloging Agency	Number of Records
1	NYP	114,456
2	NLC	88,703
3	MUL	64,772
4	NLM	51,985
5	IXA	49,408
6	WIH	37,178
7	CGU	35,839
8	YUS	33,784
9	COO	30,349
10	CRL	28,629
11	NYG	27,598
12	NDD	26,165
13	CLU	23,761
14	HLS	21,807
15	GZM	20,361
16	EEM	19,830
17	CAI	19,700
18	AGL	18,392
19	IUL	18,157
20	CUY	17,037

**Table 2.8.12. All Original Cataloging Agency Codes:
Manuscripts,
LC-Created Records**

Manuscripts, LC-Created [Set 05_MS_LC]		
	Original Cataloging Agency	Number of Records
1	DLC	10,636
2	DLC-R	830
3	DLC/ICU	4
4	LNN	1

**Table 2.8.13. Top 20 Original Cataloging Agency Codes:
Manuscripts,
nonLC-Created Records
Total Agencies Creating Records: 4,266**

Manuscripts, nonLC-Created [Set 05_MS_nonLC]		
	Original Cataloging Agency	Number of Records
1	CRL	155,537
2	BRI	108,353
3	MYG	97,717
4	OSU	81,680
5	IXA	71,470
6	CUY	71,299
7	GZM	65,730
8	EEM	60,379
9	ZCU	57,598
10	WAU	52,034
11	MUU	48,284
12	UIU	46,126
13	IWA	39,408
14	IUL	36,963
15	NOC	36,215
16	CGU	35,559
17	CLU	35,067
18	FUG	34,781
19	UMC	33,397
20	KKU	32,667

**Table 2.8.14. All Original Cataloging Agency Codes:
Music,
LC-Created Records**

Music, LC-Created [Set 06_MU_LC]		
	Original Cataloging Agency	Number of Records
1	DLC	109,243
2	DLC-R	2
3	DLC,	1
4	NSD	1
5	DLC Sibley Musical Library	1
6	DLC Newberry Library	1

**Table 2.8.15. Top 20 Original Cataloging Agency Codes:
Music,
nonLC-Created Records
Total Agencies Creating Records: 3,207**

Music, nonLC-Created [Set 06_MU_nonLC]		
	Original Cataloging Agency	Number of Records
1	EQO	48,483
2	NYP	45,907
3	CUY	37,592
4	RER	31,911
5	HMU	31,528
6	CUD	22,736
7	PLF	18,911
8	INT	17,591
9	UIU	16,863
10	YUU	16,486
11	TSW	14,866
12	KTS	14,237
13	AZS	13,932
14	DRB	13,712
15	COO	13,169
16	CLE	12,997
17	CLU	11,725
18	CIN	10,837
19	NDD	10,645
20	OCO	10,369

**Table 2.8.16. All Original Cataloging Agency Codes:
Sound Recordings,
LC-Created Records**

Sound Recordings, LC-Created [Set 07_SR_LC]		
	Original Cataloging Agency	Number of Records
1	DLC	241,900
2	NSD	35
3	LCD	2
4	DLC /	1
5	DLC c VEH d OCL d m.c.	1
6	SRS DLC	1

**Table 2.8.17. Top 20 Original Cataloging Agency Codes:
Sound Recordings,
nonLC-Created Records
Total Agencies Creating Records: 5,910**

Sound Recordings, LC-Created [Set 07_SR_nonLC]		
	Original Cataloging Agency	Number of Records
1	BGU	58,431
2	HLS	33,180
3	IUL	23,577
4	CLE	20,451
5	DMM	18,800
6	SVP	18,722
7	KTS	18,320
8	NYP	17,705
9	IXA	17,674
10	OCO	17,645
11	B2Q	13,952
12	VUT	13,064
13	SYB	12,671
14	EEM	12,566
15	CUT	12,315
16	JED	12,140
17	RFB	11,911
18	IJZ	11,558
19	PUL	10,877
20	CXP	10,248

**Table 2.8.18. Top 20 Original Cataloging Agency Codes:
Projected Media, LC-Created Records
Total Agencies Creating Records: 23**

Projected Media, LC-Created [Set 08_PM_LC]		
	Original Cataloging Agency	Number of Records
1	DLC	21,830
2	DGPO/DLC	213
3	DLC-M	12
4	Filmstrip House for DLC	7
5	A.L.A.Booklist for DLC	4
6	Budek Films and Slides for DLC	3
7	DGOP/DLC	2
8	Wayne Univ. Audio-Visual Materials Consultation Bu...	2
9	DLC :	1
10	NST	1
11	GPO/DLC	1
12	United Nations for DLC	1
13	Popular Science Pub. Co. for DLC	1
14	Portland State College Library for DLC	1
15	Sugar Information, inc. for DLC	1
16	Society for Visual Education for DLC	1
17	Young America Films for DLC	1
18	British Information Services for DLC	1
19	Educational Audio Visual for DLC	1
20	Ealing Corporation for DLC	1

**Table 2.8.19. Top 20 Original Cataloging Agency Codes:
Projected Media, nonLC-Created Records
Total Agencies Creating Records: 10,711**

Projected Media, nonLC-Created [Set 08_PM_nonLC]		
	Original Cataloging Agency	Number of Records
1	NLM	34,135
2	LDL	17,322
3	TEFMT	13,740
4	CUY	12,003
5	CLE	11,682
6	HUA	11,562
7	EXW	11,251
8	CINE	10,837
9	YQU	10,416
10	National Audiovisual Center	9,865
11	NYP	9,343
12	HLS	8,727
13	VET	8,665
14	CVU	7,339

Projected Media, nonLC-Created [Set 08_PM_nonLC]		
	Original Cataloging Agency	Number of Records
15	DPL	7,268
16	IMD	6,519
17	IBS	6,492
18	CXP	6,370
19	ALA Booklist	6,038
20	LPU	5,795

**Table 2.8.20. All Original Cataloging Agency Codes:
Graphic Materials, LC-Created Records**

Graphic Materials, LC-Created [Set 09_GM_LC]		
	Original Cataloging Agency	Number of Records
1	DLC	62,624
2	LCP	1

**Table 2.8.21. Top 20 Original Cataloging Agency Codes:
Graphic Materials, nonLC-Created Records
Total Agencies Creating Records: 2,702**

Graphic Materials, nonLC-Created [Set 09_GM_nonLC]		
	Original Cataloging Agency	Number of Records
1	DPL	91,025
2	JTH	20,261
3	AJJ	12,589
4	YSK	12,567
5	GZM	11,464
6	DPLW	11,316
7	CUY	9,694
8	PRE	8,649
9	TNH	8,540
10	NDD	8,154
11	BEU	8,029
12	GZD	7,244
13	NOC	5,843
14	NYP	5,830
15	BAT	5,267
16	VA@	4,801
17	POI	3,977
18	PSH	3,896
19	KFS	3,880
20	MAH	3,802

**Table 2.8.22. All Original Cataloging Agency Codes:
Three-Dimensional Objects and Realia,
LC-Created Records**

Three-Dimensional Objects and Realia, LC-Created [Set 10_3D_LC]		
	Original Cataloging Agency	Number of Records
1	DLC	62

**Table 2.8.23. Top 20 Original Cataloging Agency Codes:
Three-Dimensional Objects and Realia,
nonLC-Created Records
Total Agencies Creating Records: 3.002**

Three-Dimensional Objects and Realia, nonLC-Created [Set 10_3D_nonLC]		
	Original Cataloging Agency	Number of Records
1	CHS	1,744
2	JBL	1,662
3	IBS	1,503
4	NKM	1,009
5	MXC	832
6	WSM	781
7	BVD	707
8	BGU	704
9	KMM	669
10	IF9	665
11	DPL	658
12	WSU	655
13	MOU	604
14	MNM	555
15	GEG	505
16	IUL	494
17	GYG	490
18	HRF	484
19	IKG	480
20	ONE	473

Q18: What is the distribution of records by cataloging source code?

Table 2.8.24. Distribution of Records by Cataloging Source Code: MCDU Project Dataset

Cataloging Source (Field 008, Character Position 39)	Cataloging Source Code	[Set 56M]	
		Number of Records	% of Total Records in Dataset
National bibliographic agency	#	11,858,897	21.11%
Cooperative cataloging program	c	910,538	1.62%
Other	d	43,407,948	77.27%
Unknown	u	0	0%
No attempt to code		0	0%
Total		56,177,383	100.00%

Table 2.8.25. Distribution of Records by Cataloging Source Code: LC-Created Records Set and nonLC-Created Records Set

Cataloging Source (Field 008, Character Position 39)	Cataloging Source Code	LC-Created [Set 00_LC]		nonLC-Created [Set 00_nonLC]	
		Number of Records	% of Total Records in Set	Number of Records	% of Total Records in Set
National bibliographic agency	#	8,540,085	98.01%	3,318,812	6.99%
Cooperative cataloging program	c	62,661	0.72%	847,877	1.79%
Other	d	110,919	1.27%	43,297,029	91.22%
Unknown	u	0	0%	0	0%
No attempt to code		0	0%	0	0%
Total		8,713,665	100.00%	47,463,718	100.00%

Table 2.8.26. Distribution of Records by Cataloging Source Code: Books, Pamphlets, and Printed Sheets Subsets

Cataloging Source (Field 008, Character Position 39)	Cataloging Source Code	LC-Created [Set 01_B_LC]		nonLC-Created [Set 01_B_nonLC]	
		Number of Records	% of Total Records in Subset	Number of Records	% of Total Records in Subset
National bibliographic agency	#	7,544,381	99.32%	3,068,659	8.88%
Cooperative cataloging program	c	50,514	0.67%	688,736	1.99%
Other	d	992	0.01%	30,788,805	89.12%
Unknown	u	0	0%	0	0%
No attempt to code		0	0%	0	0%
Total		7,595,887	100.00%	34,546,200	100.00%

**Table 2.8.27. Distribution of Records by Cataloging Source Code:
Cartographic Materials Subsets**

Cataloging Source (Field 008, Character Position 39)	Cataloging Source Code	LC-Created [Set 02_CM_LC]		nonLC-Created [Set 02_CM_nonLC]	
		Number of Records	% of Total Records in Subset	Number of Records	% of Total Records in Subset
National bibliographic agency	#	242,053	99.97%	5,450	0.91%
Cooperative cataloging program	C	58	0.02%	2,701	0.45%
Other	D	21	0.01%	588,491	98.63%
Unknown	U	0	0%	0	0%
No attempt to code		0	0%	0	0%
Total		242,132	100.00%	596,642	100.00%

**Table 2.8.28. Distribution of Records by Cataloging Source Code:
Electronic Resources Subsets**

Cataloging Source (Field 008, Character Position 39)	Cataloging Source Code	LC-Created [Set 03_ER_LC]		nonLC-Created [Set 03_ER_nonLC]	
		Number of Records	% of Total Records in Subset	Number of Records	% of Total Records in Subset
National bibliographic agency	#	15,932	39.95%	35,802	4.11%
Cooperative cataloging program	c	3,613	9.06%	13,789	1.58%
Other	d	20,334	50.99%	822,290	94.31%
Unknown	u	0	0%	0	0%
No attempt to code		0	0%	0	0%
Total		39,879	100.00%	871,881	100.00%

**Table 2.8.29. Distribution of Records by Cataloging Source Code:
Continuing Resources Subsets**

Cataloging Source (Field 008, Character Position 39)	Cataloging Source Code	LC-Created [Set 04_CR_LC]		nonLC-Created [Set 04_CR_nonLC]	
		Number of Records	% of Total Records in Subset	Number of Records	% of Total Records in Subset
National bibliographic agency	#	290,575	74.83%	105,660	4.82%
Cooperative cataloging program	c	8,248	2.12%	21,708	0.99%
Other	d	89,509	23.05%	2,065,641	94.19%
Unknown	u	0	0%	0	0%
No attempt to code		0	0%	0	0%
Total		388,332	100.00%	2,193,009	100.00%

**Table 2.8.30. Distribution of Records by Cataloging Source Code:
Manuscripts Subsets**

Cataloging Source (Field 008, Character Position 39)	Cataloging Source Code	LC-Created [Set 05_MS_LC]		nonLC-Created [Set 05_MS_nonLC]	
		Number of Records	% of Total Records in Subset	Number of Records	% of Total Records in Subset
National bibliographic agency	#	11,470	99.99%	45,155	1.03%
Cooperative cataloging program	c	0	0%	7,032	0.16%
Other	d	1	0.01%	4,338,783	98.81%
Unknown	u	0	0%	0	0%
No attempt to code		0	0%	0	0%
Total		11,471	100.00%	4,390,970	100.00%

**Table 2.8.31. Distribution of Records by Cataloging Source Code:
Music Subsets**

Cataloging Source (Field 008, Character Position 39)	Cataloging Source Code	LC-Created [Set 06_MU_LC]		nonLC-Created [Set 06_MU_nonLC]	
		Number of Records	% of Total Records in Subset	Number of Records	% of Total Records in Subset
National bibliographic agency	#	109,246	100.00%	2,538	0.22%
Cooperative cataloging program	c	1	< 0.01%	7,337	0.63%
Other	d	2	< 0.01%	1,157,779	99.15%
Unknown	u	0	0%	0	0%
No attempt to code		0	0%	0	0%
Total		109,249	100.00%	1,167,654	100.00%

**Table 2.8.32. Distribution of Records by Cataloging Source Code:
Sound Recordings Subsets**

Cataloging Source (Field 008, Character Position 39)	Cataloging Source Code	LC-Created [Set 07_SR_LC]		nonLC-Created [Set 07_SR_nonLC]	
		Number of Records	% of Total Records in Subset	Number of Records	% of Total Records in Subset
National bibliographic agency	#	241,900	99.98%	14,223	0.84%
Cooperative cataloging program	c	5	< 0.01%	2,218	0.13%
Other	d	35	0.01%	1,685,901	99.03%
Unknown	u	0	0%	0	0%
No attempt to code		0	0%	0	0%
Total		241,940	100.00%	1,702,342	100.00%

**Table 2.8.33. Distribution of Records by Cataloging Source Code:
Projected Media Subsets**

Cataloging Source (Field 008, Character Position 39)	Cataloging Source Code	LC-Created [Set 08_PM_LC]		nonLC-Created [Set 08_PM_nonLC]	
		Number of Records	% of Total Records in Subset	Number of Records	% of Total Records in Subset
National bibliographic agency	#	21,842	98.89%	38,699	2.73%
Cooperative cataloging program	C	222	1.01%	104,265	7.37%
Other	D	24	0.11%	1,272,642	89.90%
Unknown	U	0	0%	0	0%
No attempt to code		0	0%	0	0%
Total		22,088	100.00%	1,415,606	100.00%

**Table 2.8.34. Distribution of Records by Cataloging Source Code:
Graphic Materials Subsets**

Cataloging Source (Field 008, Character Position 39)	Cataloging Source Code	LC-Created [Set 09_GM_LC]		nonLC-Created [Set 09_GM_nonLC]	
		Number of Records	% of Total Records in Subset	Number of Records	% of Total Records in Subset
National bibliographic agency	#	62,624	100.00%	1,974	0.39%
Cooperative cataloging program	c	0	0%	84	0.02%
Other	d	1	< 0.01%	504,343	99.59%
Unknown	u	0	0%	0	0%
No attempt to code		0	0%	0	0%
Total		62,625	100.00%	506,401	100.00%

**Table 2.8.35. Distribution of Records by Cataloging Source Code:
Three Dimensional Objects and Realia Subsets**

Cataloging Source (Field 008, Character Position 39)	Cataloging Source Code	LC-Created [Set 10_3D_LC]		nonLC-Created [Set 10_3D_nonLC]	
		Number of Records	% of Total Records in Subset	Number of Records	% of Total Records in Subset
National bibliographic agency	#	62	100.00%	652	0.89%
Cooperative cataloging program	C	0	0%	7	0.01%
Other	D	0	0%	72,354	99.10%
Unknown	U	0	0%	0	0%
No attempt to code		0	0%	0	0%
Total		62	100.00%	73,013	100.00%

2.9. Date Ranges

2.9.1. Date Entered on File

A number of invalid date values were found. These numbers are represented in table below.

**Table 2.9.1. Invalid Date Values:
MCDU Project Dataset**

[Set 56M]					
Date	Number of Records	Date	Number of Records	Date	Number of Records
10/29/05	1	02/30/91	2	06/31/96	1
00/00/00	257	02/30/92	1	06/31/97	2
02/29/01	3	02/30/96	1	09/31/00	2
02/29/03	2	02/31/01	2	09/31/94	1
02/29/91	1	02/31/02	1	09/31/98	1
02/29/94	1	02/31/83	1	11/31/02	1
02/29/95	1	02/31/85	1	11/31/89	2
02/30/01	2	02/31/91	1		
02/30/03	1	04/31/02	1		

Q19: What is the oldest record by date entered on file?

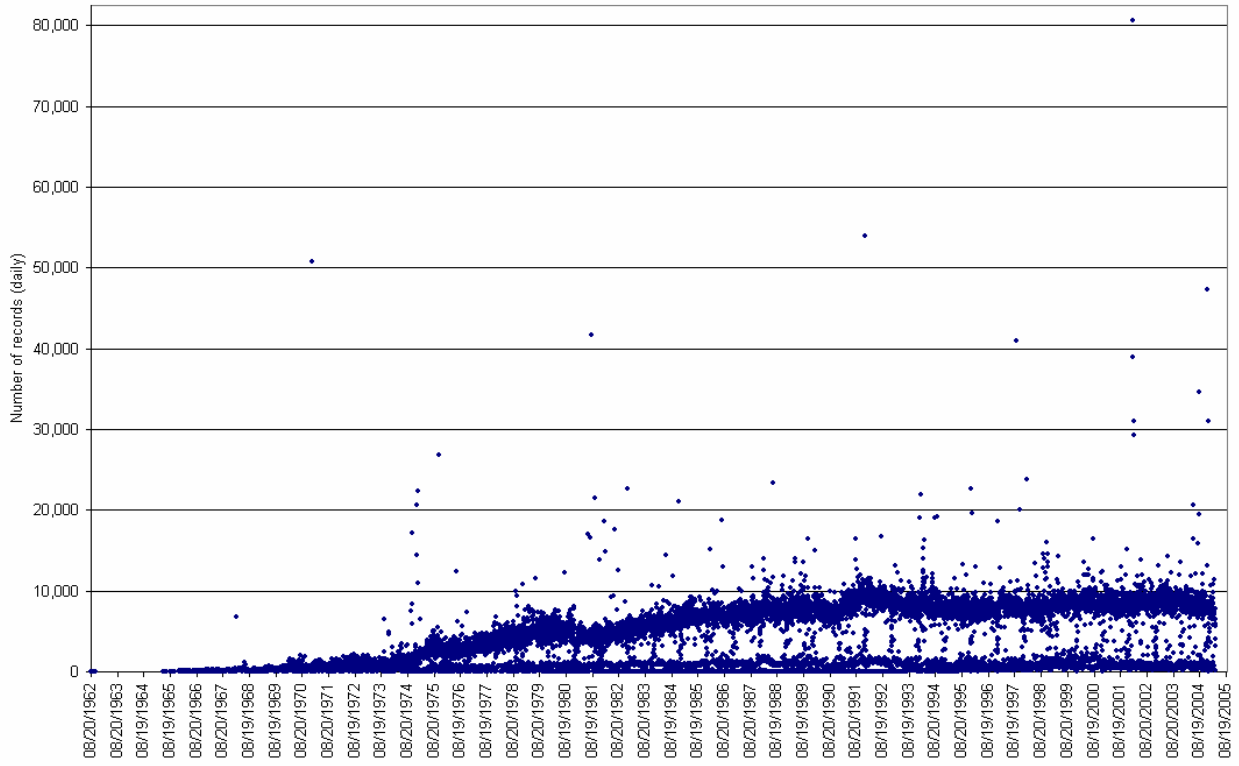
Q20: What is the newest record by date entered on file?

**Table 2.9.2. Ranges of Dates Entered on File:
All Sets**

Set Name	Oldest	Newest	Set Name	Oldest	Newest
56M	08/20/62	03/30/05			
00_LC	12/29/65	03/30/05	00_nonLC	08/20/62	03/30/05
01_B_LC	12/29/65	03/30/05	01_B_nonLC	08/20/62	03/30/05
02_CM_LC	09/26/68	03/28/05	02_CM_nonLC	01/01/66	03/30/05
03_ER_LC	06/20/76	03/30/05	03_ER_nonLC	11/26/68	03/30/05
04_CR_LC	02/22/72	03/30/05	04_CR_nonLC	10/11/62	03/30/05
05_MS_LC	04/28/69	03/18/05	05_MS_nonLC	05/23/69	03/30/05
06_MU_LC	03/01/68	03/25/05	06_MU_nonLC	07/01/66	03/30/05
07_SR_LC	10/18/71	03/28/05	07_SR_nonLC	12/31/67	03/30/05
08_PM_LC	10/13/71	03/10/05	08_PM_nonLC	08/26/62	03/30/05
09_GM_LC	03/18/71	03/23/05	09_GM_nonLC	02/20/70	03/30/05
10_3D_LC	09/05/72	02/11/04	10_3D_nonLC	12/27/71	03/30/05

Q21: What is the number of records per day by date entered on file?

**Figure 2.9.1. Distribution of Number of Records per Day by Date Entered on File:
MCDU Project Dataset**



Q22: What is the number of records per year by date entered on file?

**Table 2.9.3. Number of Records per Year by Date Entered on File:
MCDU Project Dataset**

[Set 56M]					
Year	Number of records	Year	Number of records	Year	Number of records
62	24	79	1,282,484	94	2,311,222
65	191	80	1,280,314	95	2,033,620
66	8,456	81	1,184,297	96	2,014,101
67	10,783	82	1,330,181	97	2,193,636
68	28,532	83	1,436,159	98	2,181,679
69	60,449	84	1,605,007	99	2,275,030
70	107,619	85	1,755,279	00	2,311,890
71	197,125	86	1,827,967	01	2,206,533
72	261,848	87	1,809,500	02	2,385,891
73	270,335	88	2,005,616	03	2,296,574
74	460,272	89	2,067,374	04	2,328,867
75	781,374	90	1,907,456	05	483,660
76	740,610	91	2,295,340		
77	852,961	92	2,373,013		
78	1,037,589	93	2,176,525		

**Table 2.9.4. Number of Records per Year by Date Entered on File:
All Sets of LC-Created Records**

Year	LC-Created Records Sets									
	Books, Pamphlets, and Printed Sheets [Set 01_B_LC]	Cartographic Materials [Set 02_CM_LC]	Electronic Resources, LC-Created [Set 03_ER_LC]	Continuing Resources [Set 04_CR_LC]	Manuscripts [Set 05_MS_LC]	Music [Set 06_MU_LC]	Sound Recordings [Set 07_SR_LC]	Projected Media [Set 08_PM_LC]	Graphic Materials [Set 09_GM_LC]	Three-Dimensional Objects and Realia [Set 10_3D_LC]
62					2					
63										
64										
65	1				25					
66	32				842					
67	12				859					
68	10,900	16			4,065		1			
69	42,873	1,206			1,240	8	10			
70	84,947	3,762			1,499	33	14			
71	107,219	9,157			820	84	61	19	2	1
72	127,275	4,944		57	721	71	1,131	209	336	8
73	123,832	5,628		3,775	1,012	82	1,311	139	630	
74	142,521	6,626		9,965	3,742	189	2,845	325	246	1
75	252,098	7,005		19,852	72,198	71	3,827	114	143	
76	261,556	7,391	1	17,577	37,316	75	4,897	564	267	4
77	287,709	7,654		12,519	27,197	36	4,099	9,577	1,657	6
78	302,783	6,134		12,451	36,254	36	3,561	8,476	1,243	4
79	331,093	6,146		18,335	63,977	80	3,706	6,998	442	5
80	280,375	6,467		18,260	64,683	72	3,117	7,097	433	1
81	195,831	5,239		11,367	53,063	85	2,253	1,939	252	
82	218,104	5,799		13,246	82,633	821	1,934	1,934	206	2
83	254,461	7,839	2	11,935	78,849	323	2,098	1,654	437	3
84	254,162	5,921	3	12,836	77,011	279	4,933	5,092	355	1
85	292,600	10,639	9	11,603	83,742	463	4,264	4,681	64	5
86	241,753	7,882	3	12,810	74,275	356	4,442	4,071	332	87
87	246,731	6,982	40	12,076	74,286	191	3,482	3,713	496	181
88	245,948	6,542	39	12,364	70,282	1,141	4,139	4,204	492	84
89	262,427	7,612	133	11,262	73,785	968	5,010	4,816	1,611	2,405
90	256,025	6,602	281	11,801	72,553	871	3,962	4,232	937	3,356
91	254,572	7,093	406	12,889	66,828	441	4,653	5,246	2,670	4,179
92	233,921	7,059	544	14,893	77,818	262	4,823	14,959	861	3,674
93	229,573	7,214	686	12,460	77,204	268	5,726	15,663	1,303	5,006
94	220,939	5,706	576	11,821	92,575	601	4,135	17,602	807	3,035
95	197,274	5,866	1,029	15,452	98,588	348	2,635	16,925	1,010	6,277
96	198,059	7,616	1,214	12,188	67,459	1,573	4,375	7,681	1,058	4,531
97	194,203	7,168	1,395	11,992	68,586	61	2,100	4,729	817	2,840
98	206,873	7,338	1,720	10,523	87,585	177	2,189	5,766	320	3,245
99	200,491	6,356	1,652	7,165	77,500	92	2,370	4,019	248	4,079
00	196,230	8,573	2,065	6,633	90,689	122	2,035	5,625	176	3,100
01	180,237	7,459	4,729	9,085	107,499	167	3,600	10,132	451	3,379
02	178,895	6,942	9,128	10,167	94,142	87	2,577	30,980	610	3,953
03	149,052	7,312	6,890	8,340	59,713	393	1,723	23,311	745	3,861
04	116,910	5,933	5,712	8,549	58,298	517	1,036	7,983	398	4,515
05	15,390	1,304	1,622	2,084	11,594	27	175	1,465	33	797

**Table 2.9.5. Number of Records per Year by Date Entered on File:
All Sets of nonLC-Created Records**

Year	nonLC-Created Records Sets									
	Books, Pamphlets, and Printed Sheets [Set 01_B_nonLC]	Cartographic Materials [Set 02_CM_nonLC]	Electronic Resources, LC-Created [Set 03_ER_nonLC]	Continuing Resources [Set 04_CR_nonLC]	Manuscripts [Set 05_MS_nonLC]	Music [Set 06_MU_nonLC]	Sound Recordings [Set 07_SR_nonLC]	Projected Media [Set 08_PM_nonLC]	Graphic Materials [Set 09_GM_nonLC]	Three-Dimensional Objects and Realia [Set 10_3D_nonLC]
62	5			2				17		
63										
64										
65	162			25				3		
66	7,573	2		842		7				
67	9,908	1		859			3			
68	13,546	1	1	4,065		1	1			
69	15,082	19	6	1,240	3	2				
70	17,212	88	6	1,499	6	4			48	
71	79,086	379	9	820	44	102	78	62	1	1
72	117,123	289	31	721	139	2,211	647	6,580	11	64
73	113,997	221	27	1,012	6,719	2,491	1,138	9,290	16	27
74	270,908	401	51	3,742	5,856	6,259	1,535	8,726	15	60
75	395,717	622	104	72,198	9,455	10,528	406	9,098	92	44
76	366,466	612	48	37,316	19,354	12,983	1,119	9,526	133	721
77	418,017	1,854	61	27,197	33,313	11,848	17,172	18,108	737	1,370
78	548,881	3,841	63	36,254	44,352	15,159	25,684	25,711	1,164	1,764
79	694,732	4,554	77	63,977	67,297	21,672	30,749	29,507	1,496	1,618
80	707,495	7,102	53	64,683	93,053	20,648	38,719	27,800	2,780	2,158
81	720,009	9,327	180	53,063	103,186	19,899	30,577	27,228	2,399	1,463
82	792,142	10,069	267	82,633	109,970	23,643	38,011	26,156	2,865	2,378
83	840,016	11,620	300	78,849	121,578	25,441	43,513	31,121	2,876	2,093
84	995,162	14,122	952	77,011	122,870	31,380	44,720	30,543	2,672	1,993
85	1,053,267	19,172	5,641	83,742	144,445	32,019	47,021	37,878	5,553	2,213
86	1,162,795	16,040	5,590	74,275	151,886	40,473	55,988	39,384	7,875	1,925
87	1,147,400	17,886	4,865	74,286	145,243	40,216	52,193	43,125	8,112	2,282
88	1,281,870	14,162	6,362	70,282	169,115	67,468	59,162	45,100	15,249	1,893
89	1,306,001	14,835	7,049	73,785	181,005	64,864	54,833	48,898	17,914	1,946
90	1,171,734	17,112	5,231	72,553	145,036	55,819	71,367	49,581	28,841	2,115
91	1,545,076	20,114	5,211	66,828	153,995	64,791	76,591	48,982	19,204	2,399
92	1,557,760	22,627	6,075	77,818	210,250	50,739	80,565	51,924	30,380	3,879
93	1,398,812	19,750	6,955	77,204	181,155	44,605	79,021	58,002	29,738	3,384
94	1,560,296	26,817	7,977	92,575	163,925	41,077	67,120	56,612	25,896	3,705
95	1,284,380	26,118	10,850	98,588	166,745	34,816	64,126	54,849	42,624	3,708
96	1,315,961	30,220	13,201	67,459	168,389	36,728	68,230	53,798	19,303	2,517
97	1,453,437	26,964	53,561	68,586	178,226	35,973	64,411	56,871	27,490	2,812
98	1,425,684	29,781	38,443	87,585	162,530	45,615	66,568	57,638	26,975	2,709
99	1,500,070	28,955	56,015	77,500	156,427	51,188	78,305	62,500	34,083	3,515
00	1,478,382	32,168	109,807	90,689	168,507	44,182	71,855	65,984	23,033	2,724
01	1,351,716	38,613	104,904	107,499	152,309	50,696	75,591	68,894	33,903	3,168
02	1,348,473	39,596	101,886	94,142	312,095	56,920	87,160	69,467	29,769	3,044
03	1,412,042	40,131	102,740	59,713	230,555	46,245	88,902	82,556	28,794	3,268
04	1,371,589	42,570	183,489	58,298	266,513	46,823	93,188	82,454	29,214	3,175
05	296,216	7,887	33,793	11,594	45,424	12,119	26,073	21,633	5,146	878

2.9.2. Date and Time of Latest Transaction

Q23: What is the oldest record by date and time of latest transaction?

Q24: What is the newest record by date and time of latest transaction?

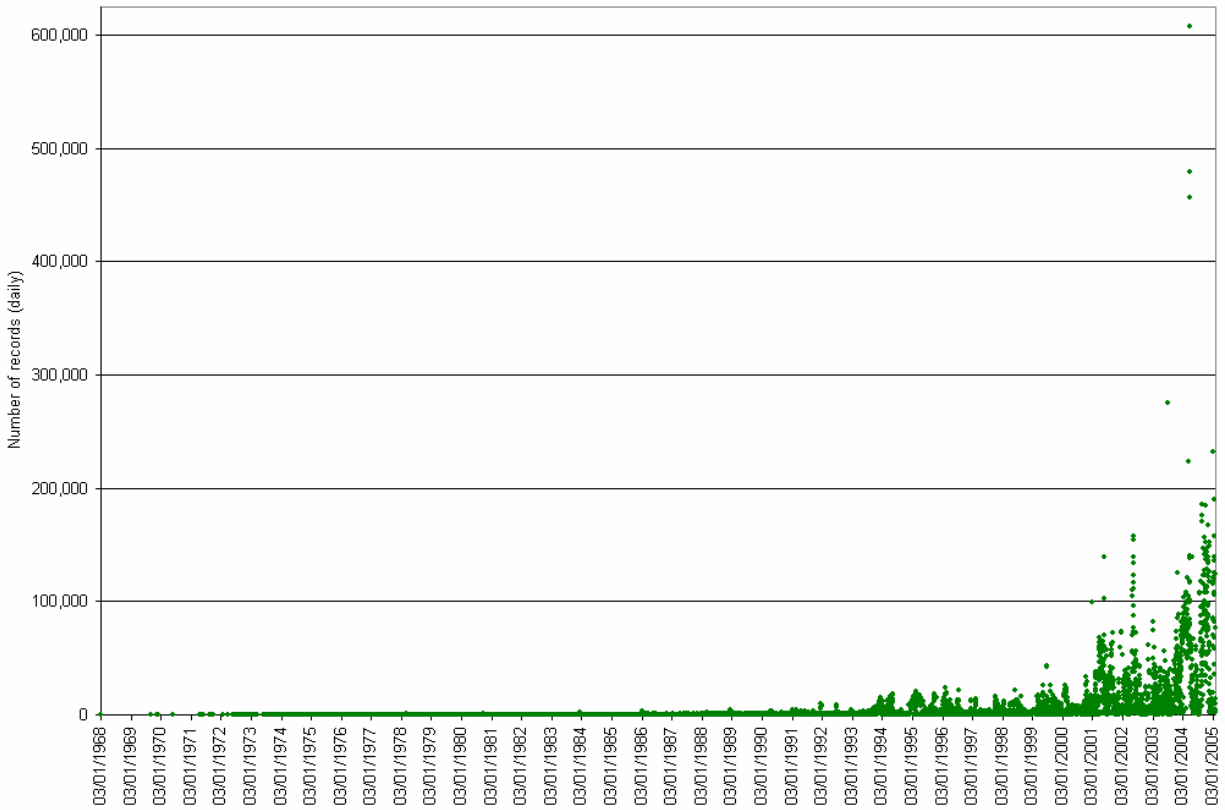
Note: 32 records in MCDU Project Dataset contain an invalid date value: 04/31/1977.

**Table 2.9.6. Newest and Oldest Records by Date and Time of Latest Transaction:
All Sets**

Set Name	Oldest	Newest
56M	19680301122837.0	20050402995626.0
00_LC	19680301122837.0	20050402995626.0
01_B_LC	19680301122837.0	20050402995626.0
02_CM_LC	19900530641355.0	20050330975026.0
03_ER_LC	19960519000001.0	20050402850748.0
04_CR_LC	19751113394713.0	20050402780437.0
05_MS_LC	19960401011439.0	20050402425333.0
06_MU_LC	19770307053514.0	20050330975217.0
07_SR_LC	19881028372936.0	20050401524520.0
08_PM_LC	19861216693116.0	20050401171424.0
09_GM_LC	19930913600436.0	20050330943519.0
10_3D_LC	19950217551407.0	20050312364145.0
00_nonLC	19741009645950.0	20050402995213.0
01_B_nonLC	19741009645950.0	20050402995213.0
02_CM_nonLC	19801116130056.0	20050401794856.0
03_ER_nonLC	19950417070546.0	20050402883059.0
04_CR_nonLC	19751014324805.0	20050402985333.0
05_MS_nonLC	19960304031354.0	20050402980729.0
06_MU_nonLC	19761218673321.0	20050402484807.0
07_SR_nonLC	19881018014349.0	20050401995048.0
08_PM_nonLC	19780131543101.0	20050402984624.0
09_GM_nonLC	19810224055132.0	20050402302714.0
10_3D_nonLC	19800825730508.0	20050401205143.0

Q25: What is the number of records per day by date and time of latest transaction?

Figure 2.9.2. Distribution of Number of Records per Day by Date and Time of Latest Transaction: MCDU Project Dataset



Q26: What is the number of records per year by date and time of latest transaction?

**Table 2.9.7. Number of Records per Year by Date and Time of Latest Transaction:
MCDU Project Dataset**

[Set 56M]					
Year	Number of records	Year	Number of records	Year	Number of records
1968	1	1982	21,810	1996	1,077,385
1969	1	1983	26,562	1997	845,312
1970	3	1984	37,660	1998	969,833
1971	10	1985	35,982	1999	1,526,010
1972	126	1986	65,749	2000	1,817,842
1973	341	1987	75,288	2001	6,420,369
1974	557	1988	103,525	2002	6,094,882
1975	1,523	1989	120,323	2003	5,826,519
1976	5,277	1990	151,026	2004	21,389,757
1977	12,969	1991	168,106	2005	5,193,971
1978	25,820	1992	257,047		
1979	26,487	1993	376,392		
1980	29,885	1994	1,401,252		
1981	28,133	1995	2,043,648		

**Table 2.9.8. Number of Records per Year Based on Date and Time of Latest Transaction:
All Sets of LC-Created Records**

Year	LC-Created Records Sets									
	Books, Pamphlets, and Printed Sheets [Set 01_B_LC]	Cartographic Materials [Set 02_CM_LC]	Electronic Resources, LC-Created [Set 03_ER_LC]	Continuing Resources [Set 04_CR_LC]	Manuscripts [Set 05_MS_LC]	Music [Set 06_MU_LC]	Sound Recordings [Set 07_SR_LC]	Projected Media [Set 08_PM_LC]	Graphic Materials [Set 09_GM_LC]	Three-Dimensional Objects and Realia [Set 10_3D_LC]
1968	1									
1969	1									
1970	3									
1971	10									
1972	126									
1973	341									
1974	556									
1975	1,401			1						
1976	2,908									
1977	6,765			1		4				
1978	13,449			4		1				
1979	8,213			22		2				
1980	6,310			25		3				
1981	2,844			1		1				
1982	3,198			75		2				
1983	2,300			125		1				
1984	3,912			189		2				
1985	2,614			188		3				
1986	3,807			197		5		1		
1987	9,627			355		3				
1988	15,134			301		25	1			
1989	14,809			305		9				
1990	35,747	1		800		85	4	4		
1991	27,534			401		75	3			
1992	76,977			413		54	2	4		
1993	73,806			382		139	3	1	1	
1994	283,800	2		581		1,261	14	2	1	
1995	312,413			5,568		841	231	686	1	1
1996	114,875		3	3,570	2	1,055	228	216	1	
1997	145,747	246	2	17,616	1	267	81	117		
1998	138,296	18		2,706	13	319	137	17	2	
1999	194,576	9,321		2,520	37	10,010	4,332	189	76	
2000	322,277	2,006	6	29,208	49	2,773	3,349	931	2	
2001	1,467,300	4,252	53	32,110	41	28,398	20,375	2,852	38	1
2002	712,475	1,443	2,736	32,461	4,375	8,056	78,436	6,787	14,492	11
2003	981,815	2,905	9,671	108,665	2,530	8,519	49,929	1,860	9,689	2
2004	2,330,479	176,035	22,851	140,396	4,177	45,731	73,693	7,483	28,666	45
2005	279,441	45,903	4,557	9,146	246	1,605	11,122	938	9,656	2

**Table 2.9.9. Number of Records per Year Based on Date and Time of Latest Transaction:
All Sets of nonLC-Created Records**

Year	nonLC-Created Records Sets									
	Books, Pamphlets, and Printed Sheets [Set 01_B_nonLC]	Cartographic Materials [Set 02_CM_nonLC]	Electronic Resources, LC-Created [Set 03_ER_nonLC]	Continuing Resources [Set 04_CR_nonLC]	Manuscripts [Set 05_MS_nonLC]	Music [Set 06_MU_nonLC]	Sound Recordings [Set 07_SR_nonLC]	Projected Media [Set 08_PM_nonLC]	Graphic Materials [Set 09_GM_nonLC]	Three-Dimensional Objects and Realia [Set 10_3D_nonLC]
1968										
1969										
1970										
1971										
1972										
1973										
1974	1									
1975	119			2						
1976	2,080			288		1				
1977	5,632			511		56				
1978	12,101			241		19		5		
1979	17,725			474		46		5		
1980	22,819	15		634		62		9		8
1981	24,642	4		532		46		30	9	24
1982	17,520	13		518		268		79	39	98
1983	22,316	7		1,328		352		49	11	73
1984	30,529	6		2,296		506		124	13	83
1985	29,731	10		2,456		431		111	114	324
1986	56,963	10		3,748		541		119	207	151
1987	57,677	150		5,500		1,352		278	168	178
1988	75,968	12		5,391		5,249	557	543	213	131
1989	92,923	22		6,167		5,148	305	389	133	113
1990	101,390	80		5,633		4,680	701	1,310	346	245
1991	120,364	80		9,705		7,135	1,370	795	366	278
1992	164,582	54		4,336		6,494	1,366	1,065	1,217	483
1993	283,119	269		5,403		6,687	3,623	758	1,621	580
1994	1,046,622	777		10,098		45,276	7,657	2,668	1,938	555
1995	1,568,710	1,060	1	32,538		47,156	27,317	36,355	3,468	7,302
1996	800,178	2,983	318	45,960	45,215	25,222	20,485	13,707	1,948	1,419
1997	578,106	2,972	34	7,708	48,326	11,678	16,354	12,639	2,200	1,218
1998	679,649	2,415	100	38,722	54,864	13,726	23,152	11,564	2,810	1,323
1999	955,755	32,227	104	40,091	52,672	131,501	50,718	31,115	8,924	1,842
2000	1,081,870	9,481	1,446	163,392	50,229	48,720	31,521	54,159	12,168	4,254
2001	4,088,888	35,858	3,742	240,009	29,647	60,499	272,619	111,529	17,468	4,680
2002	3,053,792	19,890	158,031	184,405	1,187,120	100,295	203,907	211,516	105,452	9,211
2003	3,060,524	29,225	113,284	276,656	816,811	100,767	152,832	69,547	26,622	4,668
2004	12,995,413	280,660	396,595	949,915	1,752,358	483,524	718,845	702,379	251,429	29,083
2005	3,498,492	178,362	198,226	148,352	353,728	60,217	169,013	152,759	67,517	4,689

3. References

Library of Congress. (1999). Network Development and MARC Standards Office. *MARC21 Format for Bibliographic Data*. Washington, DC: Library of Congress Cataloging Distribution Service.

OCLC Online Computer Library Center, Inc. (2003). *OCLC Bibliographic Formats and Standards* (3rd edition). Retrieved 15 November 2005 from <http://www.oclc.org/bibformats/>.